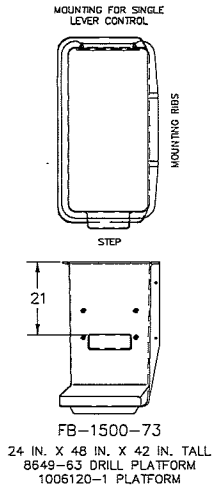
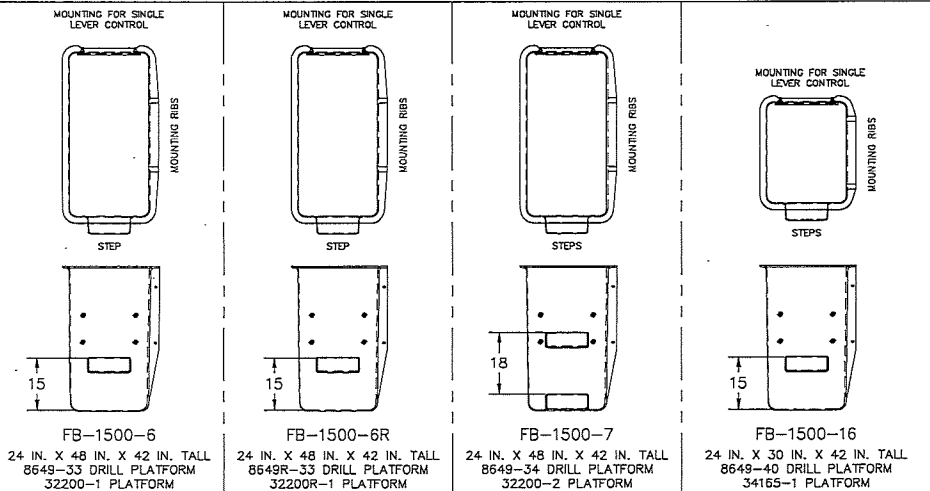


REV.	DRN NO.	DESCRIPTION	BY	CHKD.	APPR.	DATE
②	51969	ADDED -9, ITEM "Q", AND SHEET 2.	MAS	SS	SKV	5/16/15



FB-1500-73  
24 IN. X 48 IN. X 42 IN. TALL  
8649-63 DRILL PLATFORM  
1006120-1 PLATFORM

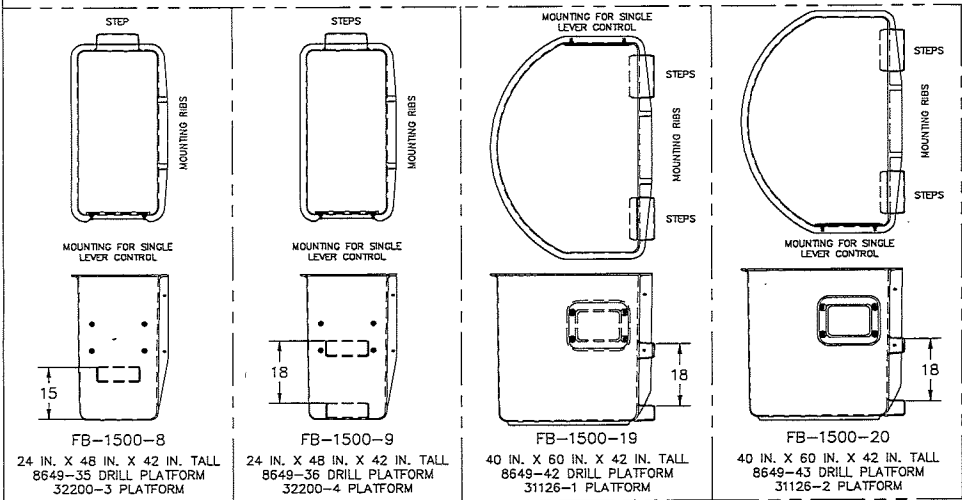
DASH NO.	DESCRIPTION	OPTION
-1	CLOSED PLTFM 24 X 48 X 42, R.H. CNTRL, 1-STEP, VST-7500	FB-1500-6
-2	CLOSED PLTFM 24 X 48 X 42, R.H. CNTRL, 2-STEP, VST-7500	FB-1500-7
-3	CLOSED PLTFM 24 X 48 X 42, L.H. CNTRL, 1-STEP, VST-7500	FB-1500-8
-4	CLOSED PLTFM 24 X 48 X 42, L.H. CNTRL, 2-STEP, VST-7500	FB-1500-9
-5	CLOSED PLTFM 24 X 30 X 42, R.H. CNTRL, 1-STEP VST-7500	FB-1500-16
-6	CLOSED PLTFM (D-BUCKET) 40 X 60 X 42, R.H. CNTRL, VST-7500	FB-1500-19
-7	CLOSED PLTFM (D-BUCKET) 40 X 60 X 42, L.H. CNTRL, VST-7500	FB-1500-20
-8	CLOSED PLTFM 24 X 48 X 42, R.H. CNTRL, 1-STEP, VST-7500 WITH FIRE RETARDANT FIBERGLASS RESIN	FB-1500-6R
-9	CLOSED PLTFM 24 X 48 X 42, R.H. CNTRL, 1-STEP, TOE SPACE VST-6300/6600/7100-HDI	FB-1500-73

	-9	-8	-7	-6	-5	-4	-3	-2	-1				
1	-	-	-	-	-	-	-	-	-	Q	8649-63	FIBERGLASS PLATFORM DRILLING (1006120-1)	
-	1	-	-	-	-	-	-	-	-	P	8649R-33	FIBERGLASS PLATFORM DRILLING (32200R-1)	
②	-	-	1	-	-	-	-	-	-	N	8649-43	FIBERGLASS PLATFORM DRILLING (31126-2)	
②	-	-	-	1	-	-	-	-	-	M	8649-42	FIBERGLASS PLATFORM DRILLING (31126-1)	
-	-	-	-	-	1	-	-	-	-	L	8649-40	FIBERGLASS PLATFORM DRILLING (34164-1)	
1	1	1	1	1	1	1	1	1	1	K	32399-DWG	PLATFORM SELECTION CHART DWG	
8	8	8	8	8	8	8	8	8	8	J	44013-1	5/8 HARDENED WASHER	
4	4	4	4	4	4	4	4	4	4	H	42005-7	5/8-NC HEX NYLON LOCKNUT GRADE B	
4	4	4	4	4	4	4	4	4	4	G	40007-13	5/8-13 x 3 HHCS	
8	8	8	8	8	8	8	8	8	8	F	25515-1	SHIM (2x4)	
②	-	-	-	-	-	1	-	-	-	E	8649-36	FIBERGLASS PLATFORM DRILLING (32200-4)	
-	-	-	-	-	-	-	1	-	-	D	8649-35	FIBERGLASS PLATFORM DRILLING (32200-3)	
-	-	-	-	-	-	-	-	1	-	C	8649-34	FIBERGLASS PLATFORM DRILLING (32200-2)	
-	-	-	-	-	-	-	-	-	1	B	8649-33	FIBERGLASS PLATFORM DRILLING (32200-1)	
1	1	1	1	1	1	1	1	1	1	A.	20528-DWG	DWG, CLOSED PLATFORMS	
QUANTITY											ITEM	PART NO.	DESCRIPTION

NOTE:  
1. SUFFIX "R" AFTER PART NUMBER (AS FB-1500-6R) INDICATES PLATFORM HAS A FIRE RETARDANT RESIN.

UNLESS OTHERWISE NOTED: TOLERANCES: DECIMALS FRACTIONS: 1/16 XX ± .03 ANGLES: ± .02 XX ± .05 MACHINED SURFACE FINISHES: PROJECTION OF VIEWS: ALL DIMENSIONS ARE IN INCHES THIS PRINT CONTAINS CONFIDENTIAL INFORMATION AND IS SOLE PROPERTY OF THE MANUFACTURER, AND IS NOT TO BE DISCLOSED, COPIED, OR REPRODUCED WITHOUT EXPRESSED PERMISSION OF TIME MANUFACTURING.	MANUFACTURING COMPANY WACO TEXAS	DWN. BY DATE REW 03/13/08 SCALE B 1/32	TITLE CLOSED PLATFORMS
		MATERIAL SEE ABOVE	EST. WT # MANUAL ---
FINISH: -----		SHEET 1 OF 2	DWG. NO. 20528-DWG

REV.  
⑥

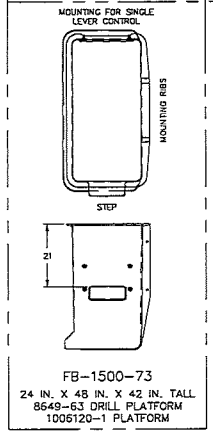
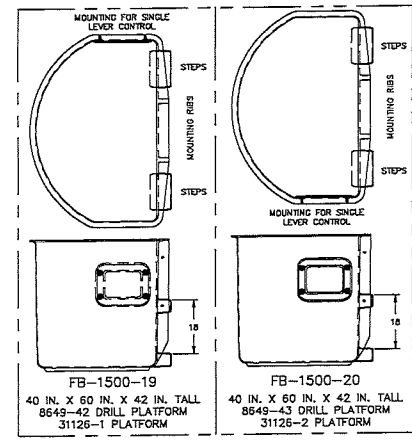
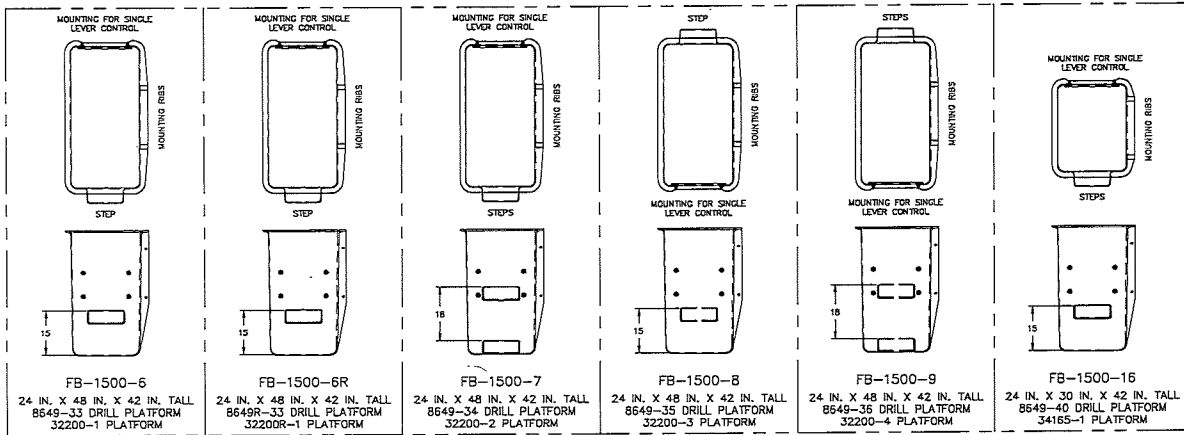


UNLESS OTHERWISE NOTED: TOLERANCES: FRACTIONS ± 1/16 X ± .1 ANGLES ± .005 X ± .03 MACHINED SURFACE FINISHES: PROJECTION OF VIEWS: ALL DIMENSIONS ARE IN INCHES THIS PRINT CONTAINS CONFIDENTIAL INFORMATION AND IS SOLE PROPERTY OF TIME MANUFACTURING COMPANY. IT IS NOT TO BE DISCLOSED, COPIED, OR REPRODUCED WITHOUT EXPRESSED PERMISSION OF THE MANUFACTURING COMPANY.		MANUFACTURING COMPANY WACO TEXAS		DWN. BY REW	DATE 03/13/08	TITLE CLOSED PLATFORMS
		MATERIAL SEE ABOVE	EST. WT # -	SCALE 1/32	MANUAL -	
FINISH -----	SHEET 2 OF 2	DWG. NO. 20528-DWG				

REV.	ERCN NO.	DESCRIPTION	BY	CHKD.	APPR.	DATE
6	61958	ADDED FB-1500-73, AND 6300HD/6500HD/7100HD TO DRAWING DESCRIPTION.	MAS	SS	SKV	6/16/15

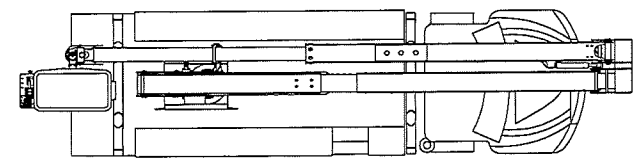
## CLOSED PLATFORMS AND ACCESSORIES VST-6300/6600/7100-HDI VST-7500/8000/8500/9000-1

**MANLIFT ONLY**



- NOTES:**
1. WHEN MOUNTING RIB PLATFORMS, USE 25515-1 SHIM'S AS REQUIRED TO OBTAIN A MAXIMUM GAP OF 1/32 IN. BETWEEN THE PLATFORM RIBS AND THE PLATFORM SUPPORT BRACKET.
  2. CB-6 VINYL PLATFORM COVER WILL INSTALL ON ALL 24 IN. X 48 IN. PLATFORMS SHOWN.
  3. LR-9 ALUMINUM PLATFORM LINER WILL INSTALL IN ALL 24 IN. X 48 IN. X 42 IN. TALL PLATFORMS SHOWN.
  - ④ 4. SUFFIX "R" (AS FB-1500-6R) INDICATES PLATFORM HAS A FIRE RETARDANT RESIN.

- NOTES:**
1. WHEN MOUNTING RIB PLATFORMS, USE 25515-1 SHIM'S AS REQUIRED TO OBTAIN A MAXIMUM GAP OF 1/32 IN. BETWEEN THE PLATFORM RIBS AND THE PLATFORM SUPPORT BRACKET.
  2. LR-15 PLATFORM LINER WILL INSTALL ON ALL 40 IN. X 60 IN. X 42 IN. PLATFORM SHOWN.
  3. LR-16 ALUMINUM PLATFORM LINER WILL INSTALL ON ALL 40 IN. X 60 IN. X 42 IN. PLATFORMS SHOWN.
  4. 40 IN. X 60 IN. X 42 IN. PLATFORMS REQUIRE ALTERNATE HOSE KIT AND PLATFORM SUPPORT.
  5. 40 IN. X 60 IN. X 42 IN. PLATFORMS ARE NOT AVAILABLE WITH MATERIAL HANDLING.

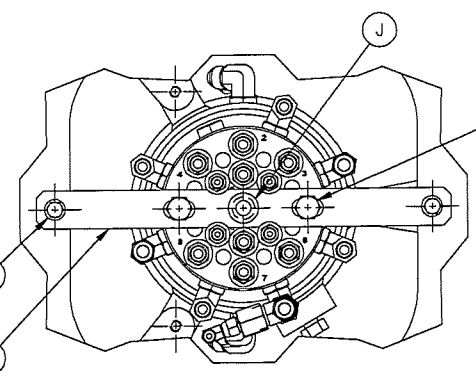
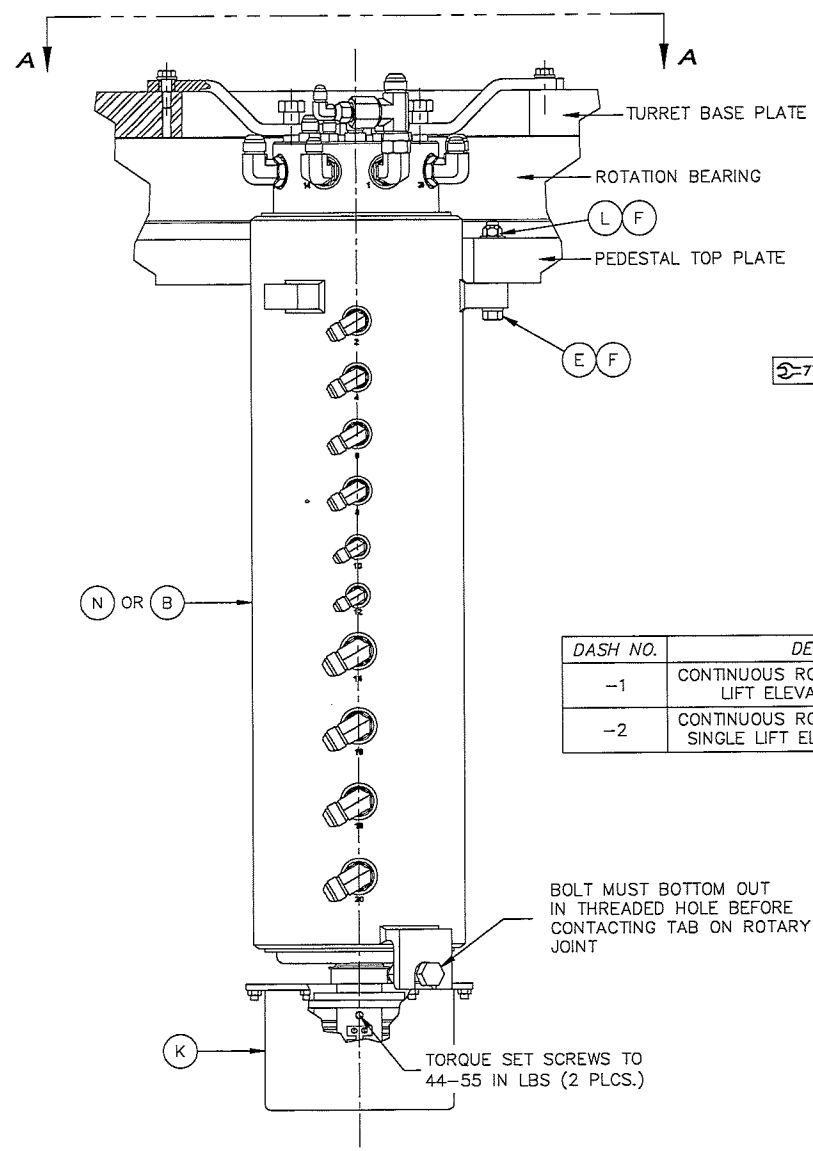


PLATFORM ORIENTATION DIAGRAM

UNLESS OTHERWISE NOTED: TOLERANCES: FRACTIONS ± 1/16 X .001 ANGLES ± .001 X .005 MACHINED SURFACE FINISHES: .0008 PROJECTION OF VIEWS: FIRST ANGLE ALL DIMENSIONS ARE IN INCHES	MANUFACTURING COMPANY WACO TEXAS	DWN. BY	DATE	TITLE PLATFORM SELECTION CHART
		LBR	12-14-05	
MATERIAL		EST. WT #	MANUAL	
FINISH		SHEET	1 OF 1	DWG. NO. 32399-DWG

REV.	ERD. NO.	DESCRIPTION	BY	ENGR.	CHKD.	APPR.	DATE
71243		PICTORIAL CHANGE OF ITEM C, ADDED ITEM P, ITEM H WAS 44000-10, ADDED TORQUE LEGEND	YX	DTG	KCM	SKV	5/29/19

LEGEND  
 =TORQUE PER CHART TMC-0778.00



NOTE:  
 1) \* INDICATES PART IS SHIPPED LOOSE.  
 2) APPLY ITEM M TO ITEM E AS NEEDED

**VIEW A-A**

DASH NO.	DESCRIPTION	CODE
-1	CONTINUOUS ROTATION - 20 PASS - LIFT ELEVATOR - VST 7500	RO-1280-2
-2	CONTINUOUS ROTATION - 20 PASS - SINGLE LIFT ELEVATOR - VST 9000	RO-1280-3

		-2	-1		
*	2	2	P	1008330-1	SPACER
	1	-	N	1005411-1	ROTARY JOINT ASSEMBLY-20 PASS
	AR	AR	M	06-046	THREAD LOCK
	3	3	L	42005-3	3/8 HEX LOCK NUT
	REF	REF	K	28457-X	COLLECTOR RING ASSEMBLY
*	1	1	J	80001-6	GROMMET 1/2 I.D.
*	2	2	H	44013-5	5/16 HARDENED WASHER
*	2	2	G	40003-5	5/16-NC X 1 LG HHCS
	3	3	F	44013-6	3/8 HARDENED WASHER
	3	3	E	40004-13	3/8-NC X 3 LG HHCS
*	2	2	D	40006-11	1/2-NC X 2 1/2 LG HHCS
*	1	1	C	1000232-1	DRIVE STRAP
	-	1	B	1000137-1	ROTARY JOINT ASSY - 20 PASS
	2	2	A	1000136-DWG	ROTARY JOINT INSTALL. - 20 PASS
	QTY.	ITEM	PART NO.	DESCRIPTION	

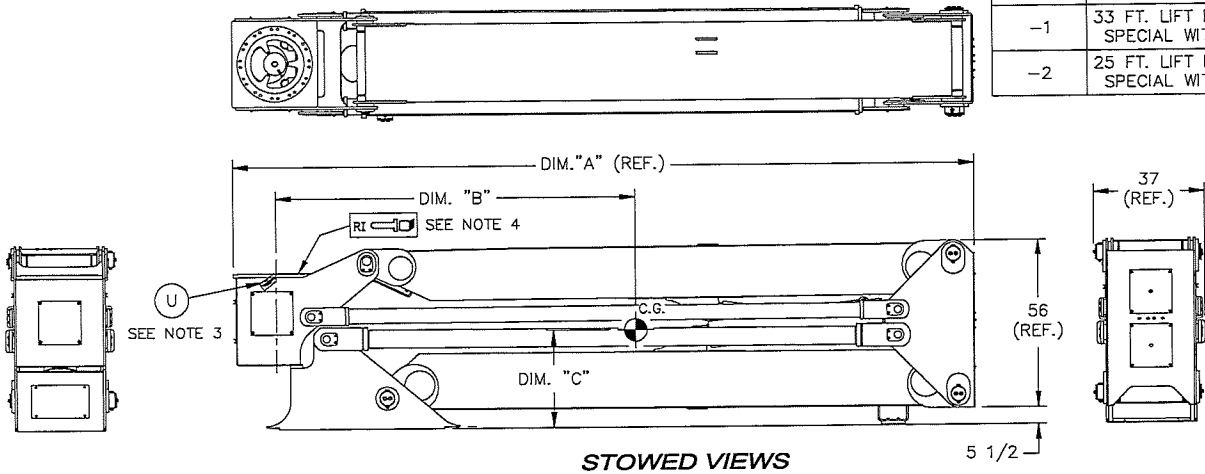
BOLT MUST BOTTOM OUT IN THREADED HOLE BEFORE CONTACTING TAB ON ROTARY JOINT

TORQUE SET SCREWS TO 44-55 IN LBS (2 PLCS.)

UNLESS OTHERWISE NOTED: TOLERANCES - DECIMALS FRACTIONS ± 1/16 ± .03 ANGLES ± .005 ± .015 MACHINED SURFACE FINISHES - 125 PROJECTION OF VIEWS - 1ST ANGLE ALL DIMENSIONS ARE IN INCHES		 MANUFACTURING COMPANY WACO TEXAS	DWG. BY	DATE	TITLE
THIS PRINT CONTAINS CONFIDENTIAL INFORMATION AND IS SOLE PROPERTY OF TIME MANUFACTURING, AND IS NOT TO BE DISCLOSED, COPIED, OR REPRODUCED WITHOUT EXPRESSED PERMISSION OF TIME MANUFACTURING.			LBR	4-1-13	ROTARY JOINT INSTALLATION 20 PASS
MATERIAL		EST. WT.	MANUAL		
FINISH		SHEET	1 OF 1	DWG. NO.	1000136-DWG

DASH NO.	DESCRIPTION	CODE
-1	33 FT. LIFT ELEVATOR ASSY SPECIAL WITH 5 IN. RISER	E-1341-3
-2	25 FT. LIFT ELEVATOR ASSY SPECIAL WITH 5 IN. RISER	E-1341-4

REV.	BRCH NO.	DESCRIPTION	BY	CHKD.	APPR.	DATE
70053		ADDED ITEM "U" AND RI SYMBOL. ADDED NOTES 3 AND 4.	LSK	DHS SS	SKV	12/20/17

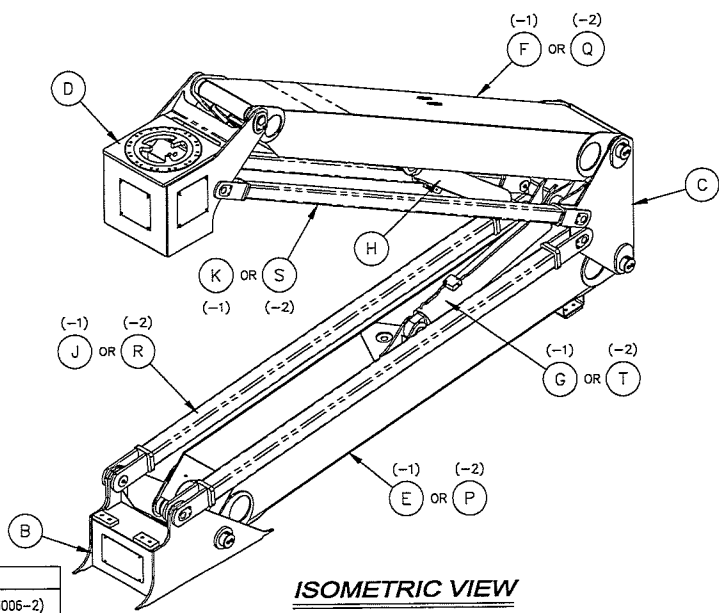


**STOWED VIEWS**

-1 SHOWN

- NOTES:
- \* INDICATES PART IS SHIPPED LOOSE.
  - ITEMS "L" AND "M" ARE USED TO SECURE ROTATION BEARING TO PEDESTAL TOP PLATE. TORQUE FASTENERS (ITEM "L") PER TMC-0778.00 AND APPLY TORQUE SEAL (ITEM "N").
  - TIE RED TAG, ITEM "U", THROUGH EXISTING BOLT HOLE.
  - BRUSH RUST INHIBITOR ONTO UNFINISHED SURFACE.

DASH NO.	DIM. "A"	DIM. "B"	DIM. "C"	LIFT WEIGHT
-1	245	118 3/4	32 3/8	10560 LB
-2	197	92 1/4	32 3/8	9400 LB



**ISOMETRIC VIEW**

LEGEND  
 RI [Symbol] = APPLY RUST INHIBITOR (83006-2)

(NOT SHOWN SEE NOTE 2)  
 (NOT SHOWN SEE NOTE 2) \*  
 (NOT SHOWN SEE NOTE 2) \*

-2	-1	U	ITEM	DESCRIPTION
1	1	U	1007697-1	RED TAG, REMOVE RUST INHIBITOR
1	-	T	53067-2	LOWER ARM CYLINDER
2	-	S	1000194-1	UPPER COMP LINK ASSEMBLY
2	-	R	1000187-1	LOWER COMP LINK ASSEMBLY
1	-	Q	1000213-1	UPPER ARM ASSEMBLY
1	-	P	1001691-2	LOWER ARM ASSEMBLY SPECIAL
A/R	A/R	N	84006-2	TORQUE SEAL
24	24	M	44013-4	3/4 HARDENED WASHER
24	24	L	40104-12	3/4-NC X 2 3/4 LG. HHCS GR.8
-	2	K	1000194-2	UPPER COMP LINK ASSEMBLY
-	2	J	1000187-2	LOWER COMP LINK ASSEMBLY
1	1	H	53067-1	UPPER ARM CYLINDER
-	1	G	53068-1	LOWER ARM CYLINDER
-	1	F	1000213-2	UPPER ARM ASSEMBLY
-	1	E	1001691-1	LOWER ARM ASSEMBLY SPECIAL
1	1	D	1000174-1	PEDESTAL ASSEMBLY
1	1	C	1000164-1	KNUCKLE ASSEMBLY
1	1	B	1001688-1	BASE ASSEMBLY SPECIAL
2	2	A	1001687-DWG	25/33 FT ELEVATOR ASSY W/ 5 IN RISER
QTY.	QTY.	ITEM	PART NO.	DESCRIPTION

UNLESS OTHERWISE NOTED:  
 TOLERANCES: DECIMALS ± .1  
 FRACTIONS ± 1/16  
 ANGLES ± .5°  
 MACHINED SURFACE FINISHES: .125  
 PROJECTION OF VIEWS: FIRST ANGLE  
 ALL DIMENSIONS ARE IN INCHES

THIS PRINT CONTAINS CONFIDENTIAL INFORMATION AND IS SOLE PROPERTY OF TIME MANUFACTURING AND IS NOT TO BE DISCLOSED, COPIED, OR REPRODUCED WITHOUT EXPRESSED PERMISSION OF TIME MANUFACTURING.

**TIME MANUFACTURING COMPANY**  
 WACO TEXAS

DWN. BY: LBR  
 DATE: 11-22-13  
 SCALE: 1=40  
 EST WT: MANUAL

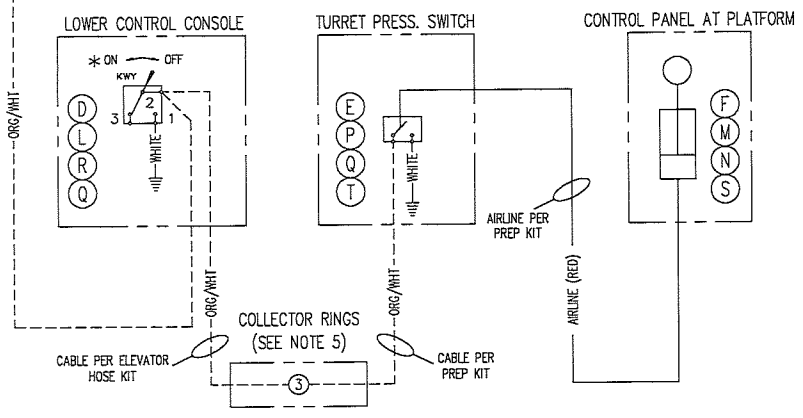
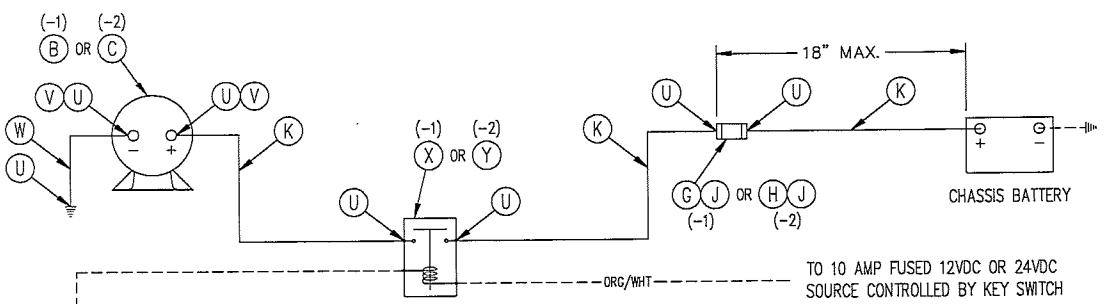
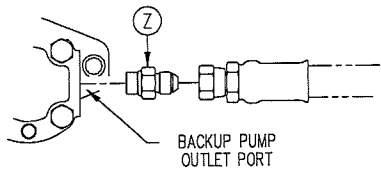
SHEET: 1 OF 1  
 DWG. NO.: 1001687-DWG

REV.	ERON NO.	DESCRIPTION	BY	CHKD.	APPR.	DATE
62761		CHANGE ALL DESCRIPTION FROM EMERGENCY POWER TO BACKUP PUMP.	REW	AJP	SS	09/01/16

- NOTES:
- 1.) ALL WIRING 18 AWG MINIMUM UNLESS NOTED.
  - 2.) RELAYS ARE SHOWN IN THE NON-ENERGIZED POSITION.
  - 3.) DASHED WIRING RUNS INDICATE INSTALLER SUPPLIED OR EXISTING CHASSIS OR UNIT WIRING.
  - 4.) \* INDICATES MOMENTARY POSITION OF TOGGLE SWITCH.
  - 5.) WIRE NUMBERS SHOWN AT COLLECTOR RINGS ARE EXAMPLES ONLY. REFER TO "COLLECTOR RING USAGE CHART" FOR ACTUAL WIRE NUMBERS BASED ON OPTION COMBINATIONS.

- 6.) \*\* INDICATES ITEMS TO BE SHIPPED LOOSE.
- 7.) ALL HOSE AND FITTING TO INSTALL ITEMS "B" AND "C" TO BE SUPPLIED BY INSTALLER. REFER TO "JIC SCHEMATIC" FOR ADDITIONAL INFORMATION.

DASH NO.	DESCRIPTION	CODE
-1	BACKUP PUMP INSULATED 12VDC	EP-1340-4
-2	BACKUP PUMP INSULATED 24VDC	EP-1340-5



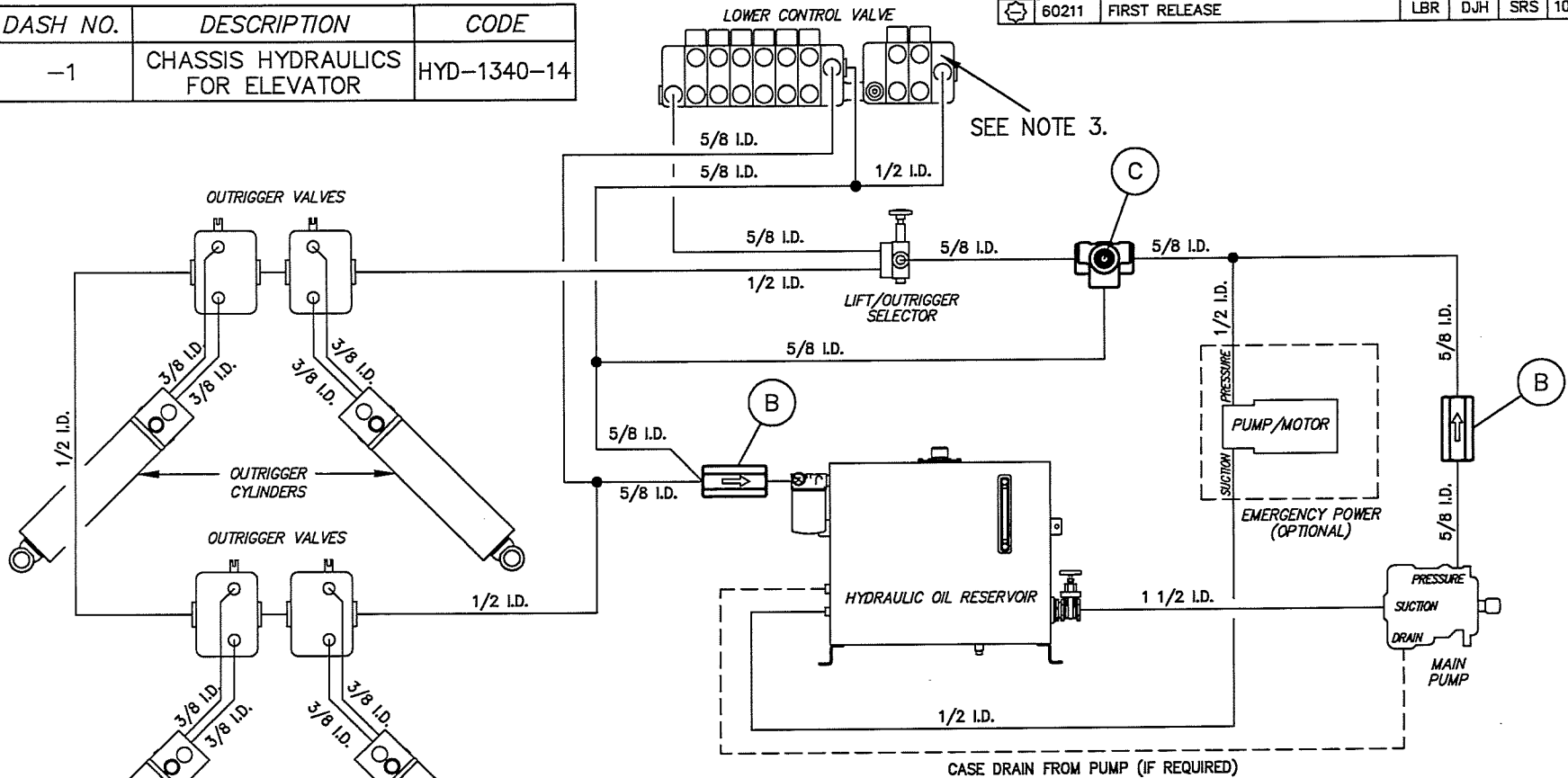
WIRE NO.	OPTION COMBINATIONS
1	SS SS THROT EP
2	THROT EP EP
3	EP

	-2	-1			
**	1	1	Z	54268-6	CHECK VALVE IN-LINE
**	1	-	Y	68034-10	SOLENOID SWITCH (24VDC)
**	-	1	X	68034-11	SOLENOID SWITCH (12VDC)
**	2 FT.	2 FT.	W	61007-2-BLK	00 AWG WELDING CABLE (BLK)
**	2	2	V	68176-3	TERMINAL INSULATOR
**	7	7	U	68046-5	00 AWG RING TERM 3/8 STUD
	1	1	T	50065-1	1/8 NPT MALE 90° ELBOW - BRASS
	1	1	S	50105-1	1/8 NPT MALE CONN - BRASS
**	1	1	R	3051-2	SWITCH GUARD
**	2 FT.	2 FT.	Q	61003-11-WHT	14 AWG WIRE - WHITE
	1	1	P	12596-1	AIR SWITCH BOOT
	1	1	N	80000-3	KNOB
	1	1	M	10274-1	DECAL, BACKUP PUMP
**	1	1	L	10310-1	DECAL, BACKUP PUMP
**	10 FT.	10 FT.	K	61007-2-RED	00 AWG WELDING CABLE (RED)
**	1	1	J	68144-2	FUSE HOLDER
**	1	-	H	68144-5	150 AMP FUSE
**	-	1	G	68144-3	300 AMP FUSE
	1	1	F	4383-1	AIR CYLINDER
	1	1	E	60015-1	LO-PRESSURE SWITCH
**	1	1	D	60002-8	TOGGLE SWITCH
**	1	-	C	56005-1	MOTOR-PUMP (24VDC)
**	-	1	B	28889-1	MOTOR-PUMP (12VDC)
	2	2	A	1000926-DWG	BACKUP PUMP INSTALLATION
	QTY.	QTY.	ITEM	PART NO.	DESCRIPTION

LIST OF MATERIAL			
UNLESS OTHERWISE NOTED:	MANUFACTURING COMPANY	OWN. BY	DATE
TOLERANCES: FRACTIONS ± 1/16 DECIMALS ± .03 ANGLES ± 1/16	TIME MANUFACTURING COMPANY WACO TEXAS	LBR	11-30-12
MACHINED SURFACE FINISHES: 125		SCALE	1=3
PROJECTION OF VIEWS: 1ST ANGLE		EST WT #	MANUAL
ALL DIMENSIONS ARE IN INCHES		SHEET	1 OF 1
THIS PRINT CONTAINS CONFIDENTIAL INFORMATION AND IS SOLE PROPERTY OF TIME MANUFACTURING, AND IS NOT TO BE DISCLOSED, COPIED, OR REPRODUCED WITHOUT EXPRESSED PERMISSION OF TIME MANUFACTURING.		DWG NO.	1000926-DWG

REV.	ERCN NO.	DESCRIPTION	BY	CHKD.	APPR.	DATE
60211	FIRST RELEASE		LBR	DJH	SRS	10-9-12

DASH NO.	DESCRIPTION	CODE
-1	CHASSIS HYDRAULICS FOR ELEVATOR	HYD-1340-14



- NOTES:
- \* INDICATES PART IS SHIPPED LOOSE.
  - ITEM "C" SYSTEM RELIEF VALVE IS NOT PRE-SET AND MUST BE ADJUSTED TO THE PROPER RELIEF PRESSURE AFTER INSTALLATION OF THE LIFT IS COMPLETE. SEE JIC HYDRAULIC SCHEMATIC FOR THE PRESSURE SETTING.
  - LIFT FUNCTION LINES FROM ELEVATOR TO HAVE THE SAME HOSE I.D. AS THOSE SUPPLIED WITH THE ELEVATOR. (SEE ELEVATOR HOSE KIT)

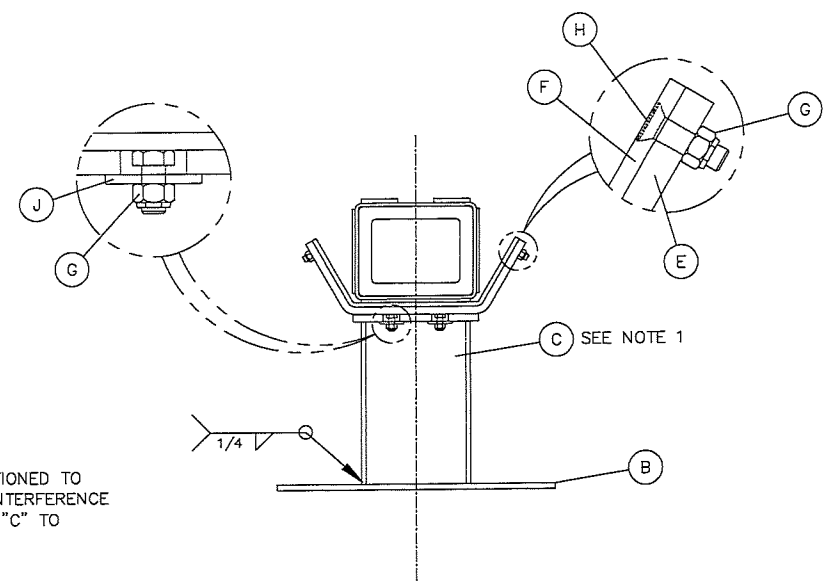
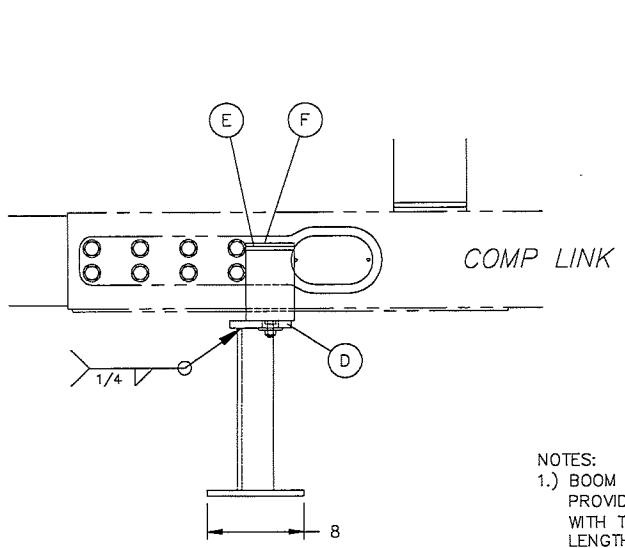
QTY.	ITEM	PART NO.	DESCRIPTION
*	1	C	54239-1 RELIEF VALVE
*	2	B	54070-1 CHECK VALVE 3/4 NPT
1	A	1000727-DWG	CHASSIS HYDRAULICS

LIST OF MATERIAL

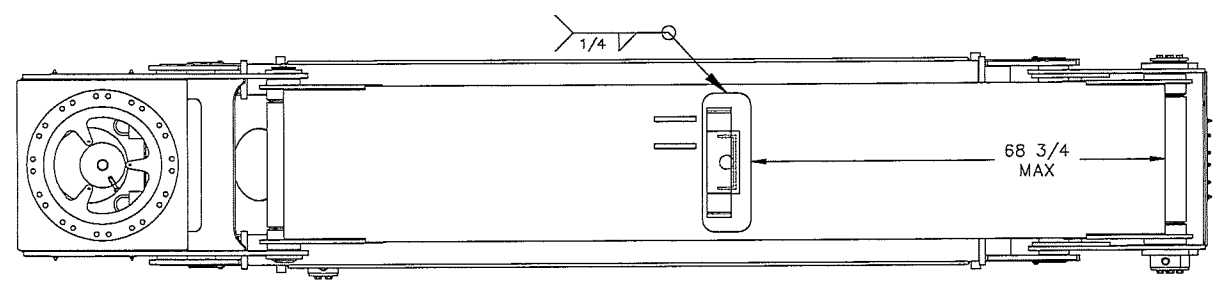
<small>UNLESS OTHERWISE NOTED: TOLERANCES: FRACTIONS ± 1/16 DECIMALS X ± .1 ANGLES ± .03 .XXX ± .005 MACHINED SURFACE FINISHES: 125 PROJECTION OF VIEWS: 123 ALL DIMENSIONS ARE IN INCHES</small>		MANUFACTURING COMPANY WACO TEXAS	DWN. BY	DATE	TITLE
			LBR	10-9-12	CHASSIS HYDRAULICS WITH ELEVATOR V0350/450
<small>THIS PRINT CONTAINS CONFIDENTIAL INFORMATION AND IS SOLE PROPERTY OF TIME MANUFACTURING, AND IS NOT TO BE DISCLOSED, COPIED, OR REPRODUCED WITHOUT EXPRESSED PERMISSION OF TIME MANUFACTURING.</small>	MATERIAL  FINISH	EST WT #  MANUAL	SIZE	SCALE	DWG. NO. 1000727-DWG
			A	1=2	
			SHEET	1 OF 1	

REV.	ERCN NO.	DESCRIPTION	BY	CHKD.	APPR.	DATE
70167		ADDED NOTE 1.	MAS	DTG/SS	SKV	2/20/18

DASH NO.	DESCRIPTION	CODE
-1	LOWER BOOM REST	BC-1280-2



NOTES:  
 1.) BOOM CRADLE SHOULD BE POSITIONED TO PROVIDE APPROXIMATELY 1/2" INTERFERENCE WITH THE COMP LINK. CUT ITEM "C" TO LENGTH AS REQUIRED.



**TOP VIEW**  
 SCALE.....N/A

SEE NOTE 1

QTY.	ITEM	PART NO.	DESCRIPTION
	J	411	PIN CAP 2"
	H	40000-10	1/2-13NC x 1 3/4 SHFH
	G	42005-5	1/2-NC LOCKNUT
	F	8719-2	BOOM REST PAD
	E	33998-1	BOOM REST SADDLE W/A
	D	29242-1	PLATE, BOOM REST
	C	29781-1	RISER, BOOM REST
	B	1001593-1	LOWER BOOM REST PLATE
	A	1001596-DWG	DWG, LOWER BOOM REST INSTALL

LIST OF MATERIAL			
OWN. BY	DATE	TITLE	
DEF	08/24/13	LOWER BOOM REST INSTALLATION	
SIZE	B	SCALE	1=10
EST WT	#	MANUAL	-
MATERIAL		FINISH	
SEE ABOVE		SEE ABOVE	
SHEET		DWG. NO.	
1 OF 1		1001596-DWG	

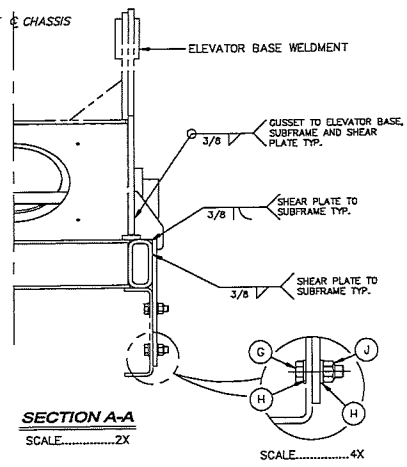
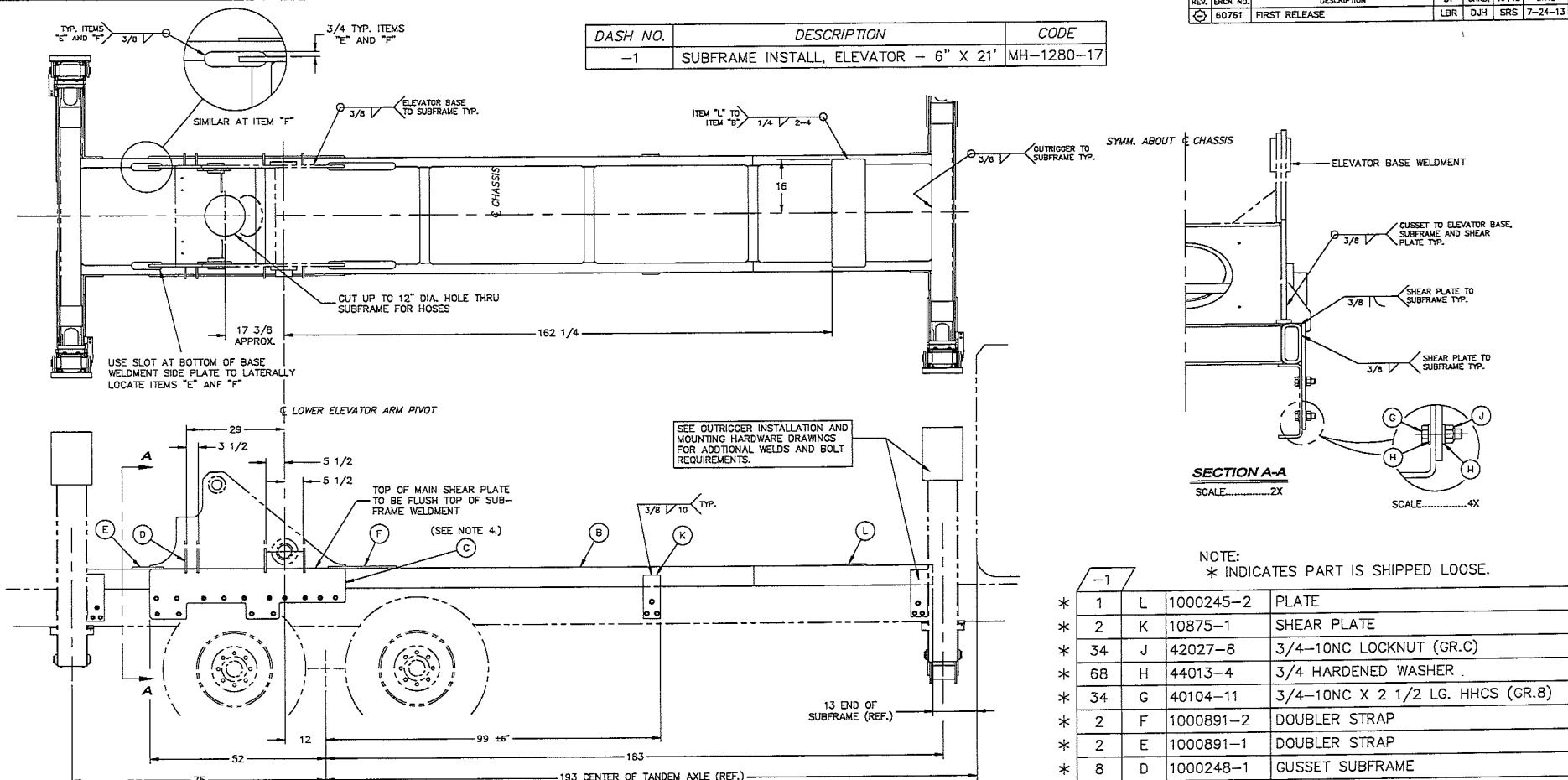
UNLESS OTHERWISE NOTED:  
 TOLERANCES: DECIMALS  
 FRACTIONS ± 1/16 X ± .01  
 ANGLES ± .1 XXX ± .005  
 MACHINED SURFACE FINISHES= 125  
 PROJECTION OF VIEWS (A) (B) (C)  
 ALL DIMENSIONS ARE IN INCHES  
 THIS PRINT CONTAINS CONFIDENTIAL INFORMATION AND IS SOLE PROPERTY OF TIME MANUFACTURING, AND IS NOT TO BE DISCLOSED, COPIED, OR REPRODUCED WITHOUT EXPRESSED PERMISSION OF TIME MANUFACTURING.



MANUFACTURING COMPANY  
 WACO TEXAS

REV.	ERCN NO.	DESCRIPTION	BY	CHKD.	APPL.	DATE
0	60761	FIRST RELEASE	LBR	DJH	SRS	7-24-13

DASH NO.	DESCRIPTION	CODE
-1	SUBFRAME INSTALL, ELEVATOR - 6" X 21'	MH-1280-17



NOTE:  
\* INDICATES PART IS SHIPPED LOOSE.

QTY.	ITEM	PART NO.	DESCRIPTION
*	1	L 1000245-2	PLATE
*	2	K 10875-1	SHEAR PLATE
*	34	J 42027-8	3/4-10NC LOCKNUT (GR.C)
*	68	H 44013-4	3/4 HARDENED WASHER
*	34	G 40104-11	3/4-10NC X 2 1/2 LG. HHCS (GR.8)
*	2	F 1000891-2	DOUBLER STRAP
*	2	E 1000891-1	DOUBLER STRAP
*	8	D 1000248-1	GUSSET SUBFRAME
*	2	C 1000247-1	MAIN SHEAR PLATE
*	1	B 1001497-1	SUBFRAME WELDMENT
*	1	A 1001496-DWG	SUBFRAME INSTALLATION DRAWING

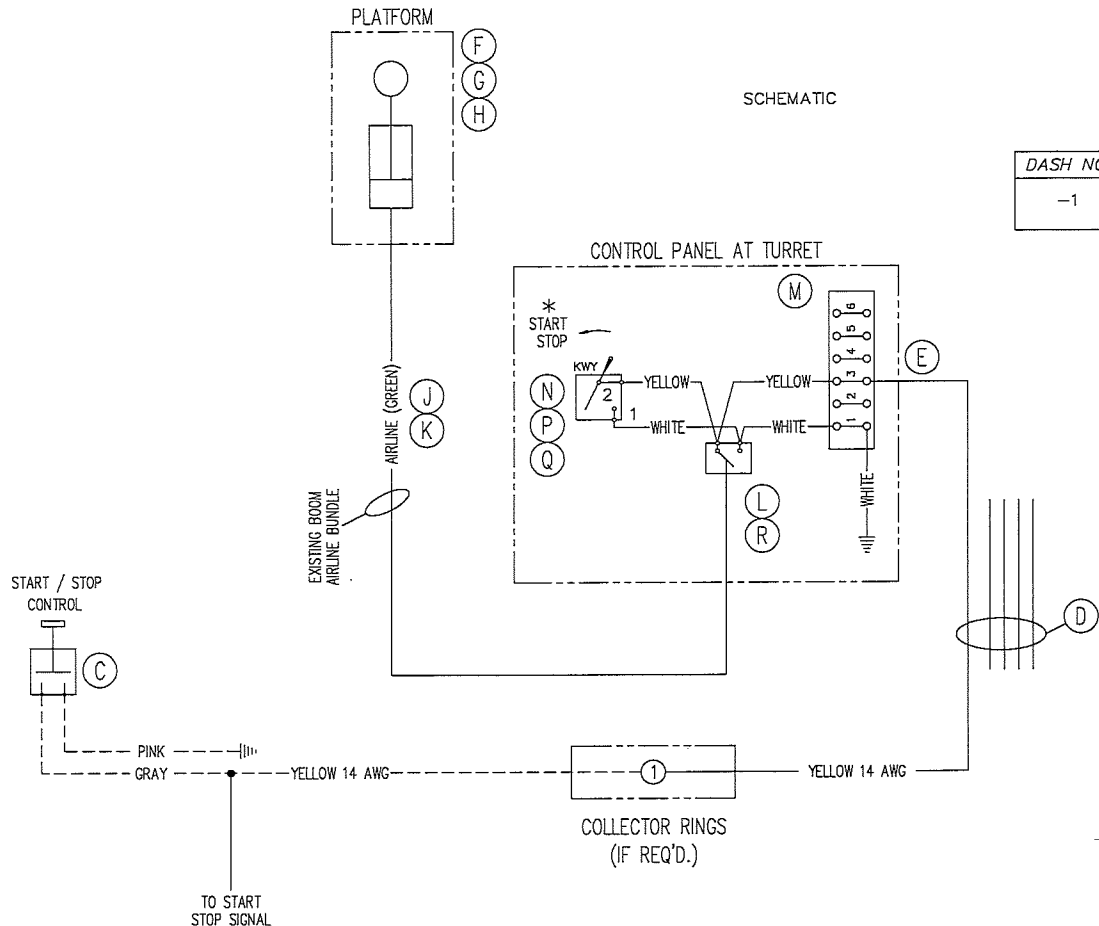
LIST OF MATERIAL

UNLESS OTHERWISE NOTED: TOLERANCES: FRACTIONS ± 1/16 DECIMALS ± .03 ANGLES ± 1° MACHINED SURFACE FINISHES: .125 PROJECTION OF VIEWS: 1ST ANGLE ALL DIMENSIONS ARE IN INCHES			MANUFACTURING COMPANY	WACO TEXAS	DWN. BY	DATE	TITLE
THIS PRINT CONTAINS CONFIDENTIAL INFORMATION AND IS SOLE PROPERTY OF THE MANUFACTURING COMPANY AND IS NOT TO BE DISCLOSED, COPIED, OR REPRODUCED WITHOUT EXPRESSED PERMISSION OF THE MANUFACTURING.			LBR	7-24-13	LBR	7-24-13	SCALE
		MATERIAL		EST. WT.	MANUAL	1=30	33 FT. ELEVATOR
		FINISH		SHEET	1 OF 1	DWG. NO.	1001496-DWG

- NOTES:
- ALL WELDING TO MEET OR EXCEED THE STRENGTH AND ELONGATION OF ER70S-6 WIRE OR E7018 ROD. (60,000 PSI YIELD AND 25% ELONGATION).
  - TORQUE BOLTS AS SPECIFIED IN TMC-778 AND APPLY TORQUE STRIPE MARKING. TORQUE VALUES ARE FOR LUBRICATED THREADS.
  - THE MATERIAL BETWEEN EDGE OF HOLE AND INSIDE OF UPPER OR LOWER FLANGE ON CHASSIS FRAME SHOULD NOT BE LESS THAN 1 1/2 IN.
  - TRIM SHEAR PLATE (ITEM "C") TO CLEAR ANY OBSTRUCTIONS ON CHASSIS FRAME AND MATCH DRILL 3/4 IN. HOLES (14) PLACES.
  - DRILL 3/4 IN. DIA. HOLES (17) PLACES TOTAL PER SIDE.
  - REFER TO THE OUTRIGGER INSTALLATION AND MOUNTING HARDWARE DRAWINGS FOR DETAILED INSTRUCTIONS FOR INSTALLING, WELDING, AND BOLTING THE OUTRIGGERS.

REV.	CRCH NO.	DESCRIPTION	BY	CHKD.	APPR.	DATE
63068		ADDED ITEM "R" QTY (1)	KCM	SS	SKV	02/24/17

DASH NO.	DESCRIPTION	CODE
-1	MASTER SWITCH & START/STOP (INSUL.) WITH 12V, WITHOUT START/STOP BOX	SS-1200-1



\* = ITEM TO BE SHIPPED LOOSE

-1			
QTY.	ITEM	PART NO.	DESCRIPTION
1	R	12596-1	AIR SWITCH BOOT
1	Q	3051-2	SWITCH GUARD
1	P	11561-1	DECAL-ENGINE CONTROL
1	N	60002-6	TOGGLE SWITCH
REF.	M	68002-6	TERMINAL BLOCK
1	L	60015-1	LO-PRESS. SWITCH
2	K	50105-1	1/8 NPT MALE CONN. - BRASS
REF.	J	58036-1	4 IN 1 TUBING RED/GRN/YEL/BLUE
1	H	10272-1	DECAL-ENGINE
1	G	80000-3	KNOB
1	F	4383-1	AIR CYLINDER
1	E	68032-2	22/18 AWG - #6 STUD SPADE TERM.
7 FT	D	61025-1	CABLE 14 AWG - 5 COND.
*	C	60012-1	PUSH BUTTON SWITCH
*	B	60002-3	TOGGLE SWITCH
2	A	1001523-DWG	MASTER SW. & START/STOP SCHEM.

\* NOT SHOWN \*

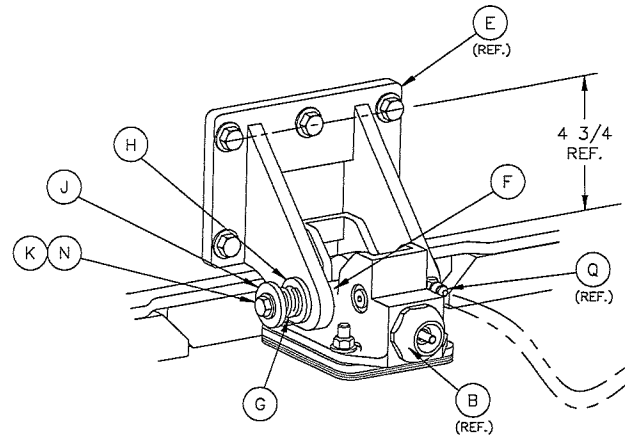
- NOTES:
- 1.) ALL WIRING IS 18 AWG UNLESS NOTED.
  - 2.) DASHED WIRING RUNS INDICATE INSTALLER SUPPLIED OR EXISTING CHASSIS WIRING.
  - 3.) \* INDICATES MOMENTARY POSITION OF TOGGLE SWITCH.

UNLESS OTHERWISE NOTED:  
 TOLERANCES: FRACTIONS ± 1/16 DECIMALS ± .03  
 ANGLES ± 1° XXX ± .005  
 MACHINED SURFACE FINISHES: 125  
 PROJECTION OF VIEWS: 1  
 ALL DIMENSIONS ARE IN INCHES

LIST OF MATERIAL			
MATERIAL	MANUFACTURING COMPANY	DRAWN BY	DATE
SEE ABOVE	TIME MANUFACTURING COMPANY WACO TEXAS	REW	08/07/13
		SIZE B	SCALE 1/2
		LOCATION	MANUAL
		SHEET 1 OF 1	DWG. NO. 1001523-DWG

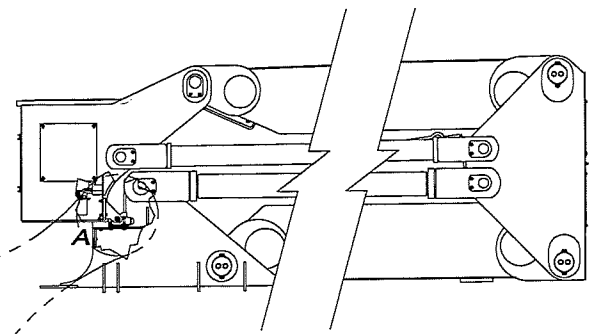
REV.	ERCH NO.	DESCRIPTION	BY	CHKD.	APPR.	DATE
62398		ADDED ASTERISK TO ITEMS TO BE SHIPPED LOOSE.	REW	DJH	SKV	01/07/16

DASH NO.	DESCRIPTION	CODE
-1	25 & 33 FT LIFT ELEVATOR AUTO LATCH INSTALLATION	BC-1341-7



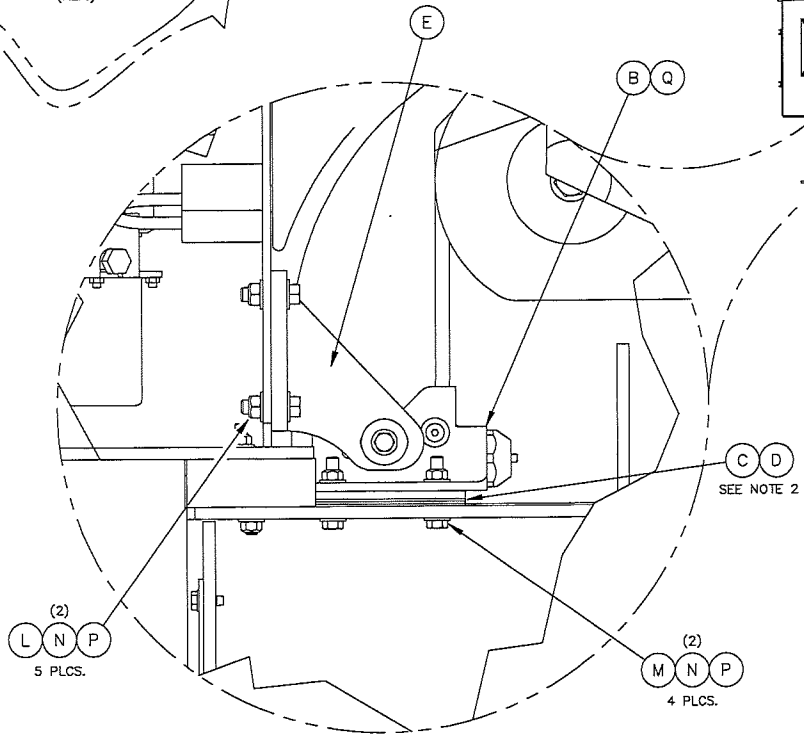
**AUTO LATCH DETAIL**  
SCALE.....8X

TEE INTO PRESSURE LINE BETWEEN PUMP AND LIFT/GROUND CONTROL SELECTOR VALVE



**INSTALLATION NOTES:**

- 1) CENTER ITEM "F" IN CATCH WELDMENT SLOT (ITEM "E") TO BE USED FOR POSITIONING AUTO LATCH (ITEM "B").
- 2) ITEM "B" SHOULD BE MOUNTED USING AT LEAST ONE EACH OF ITEM "C" AND "D", ALIGNING LATCH SUCH THAT WHEN THE PEDESTAL IS LOWERED, THE PIN FALLS WITHIN THE LATCH.
- 3) WHEN PROPERLY INSTALLED, ELEVATOR STOWED, AND LIFT POWERED OFF, THE LATCH SHOULD FULLY ENGAGE THE CATCH PIN BUT THE PIN SHOULD NOT BOTTOM OUT IN THE LATCH SLOT.
- 4) INSTALLER TO PROVIDE 1/4" HOSE ASS'Y WITH 1/4" (#4) F.JIC SWIVEL FITTINGS FOR CONNECTING LATCH TO A PRESSURE SOURCE.



**DETAIL A**  
SCALE.....8X

-1			
QTY.	ITEM	PART NO.	DESCRIPTION
*	1	Q 50011-1	#4 SAE O-RING TO MALE JIC 90°
*	9	P 42005-3	3/8-NC LOCKNUT
*	19	N 44013-6	3/8" HARDENED WASHER
*	4	M 40004-9	3/8-NC X 2 LG HHCS
*	5	L 40004-7	3/8-NC X 1 1/2 LG HHCS
*	1	K 40004-3	3/8-NC X 3/4 LG HHCS
*	1	J 44016-1	SPECIAL FLAT WASHER
*	1	H 44013-4	3/4" HARDENED WASHER
*	1	G 88019-1	STEEL COMPRESSION SPRING
*	1	F 1005269-1	CATCH PIN WELDMENT
*	1	E 1005268-1	SLOTTED CATCH WELDMENT
*	2	D 31824-2	LATCH SHIM, 1/4"
*	4	C 31824-1	LATCH SHIM, 14GA
*	1	B 58086-1	HYDRAULIC LATCH LH-5000
*	1	A 1005465-DWG	DWG, 25/33' LIFT ELEV LATCH INSTALL

\* = ITEM TO BE SHIPPED LOOSE

UNLESS OTHERWISE NOTED:		TOLERANCES:		DATE		TITLE	
FRACTIONS	± 1/16	DECIMALS	± .03	NTR	10/2/14	25/33 FT. LIFT ELEVATOR AUTO LATCH INSTALL	
ANGLES	± 1°	XXX	± .005	SIZE	B	SCALE	1/30
MACHINED SURFACE FINISHES: .125				EST WT	#	MANUAL	-
ALL DIMENSIONS ARE IN INCHES				FINISH			
THIS PRINT CONTAINS CONFIDENTIAL INFORMATION AND IS SOLE PROPERTY OF THE MANUFACTURER, AND IS NOT TO BE DISCLOSED, COPIED, OR REPRODUCED WITHOUT EXPRESSED PERMISSION OF THE MANUFACTURER.				SHEET		DWG. NO.	
				1 OF 1		1005465-DWG	



MANUFACTURING COMPANY  
WACO TEXAS

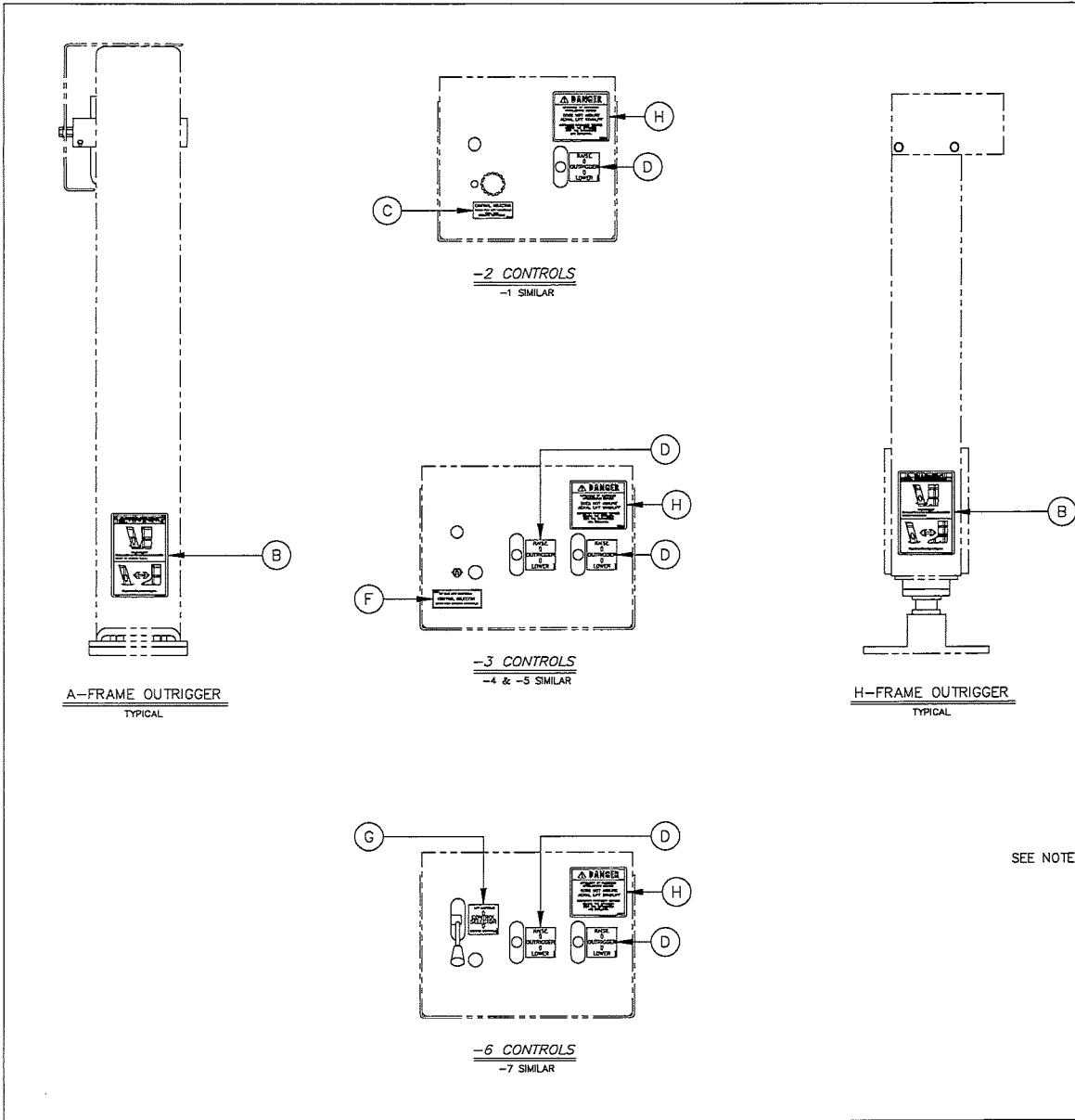
REV.	ERON NO.	DESCRIPTION	BY	CHKD.	APPR.	DATE
62589		UPDATED ITEM "B" PICTORIALLY. ADDED NOTE 1.	DTG	SS MAS	SKV	9/27/16

DASH #	DESCRIPTION	OPTION #
-1	DUAL VALVE & DUAL VALVE WITHOUT MICROSWITCH	DE-1400-1
-2	SINGLE VALVE & SINGLE VALVE WITHOUT MICROSWITCH	DE-1400-2
-3	DUAL VALVE & DUAL VALVE WITH MICROSWITCH WITH INTERLOCK	DE-1400-3
-4	SINGLE VALVE & SINGLE VALVE WITH MICROSWITCH WITH INTERLOCK	DE-1400-4
-5	DUAL VALVE & DUAL VALVE WITH MICROSWITCH, UK SPECIAL	DE-1400-5
-6	DUAL VALVE & DUAL VALVE WITH ROTARY SELECTOR	DE-1400-10
-7	SINGLE VALVE & SINGLE VALVE WITH ROTARY SELECTOR	DE-1400-11

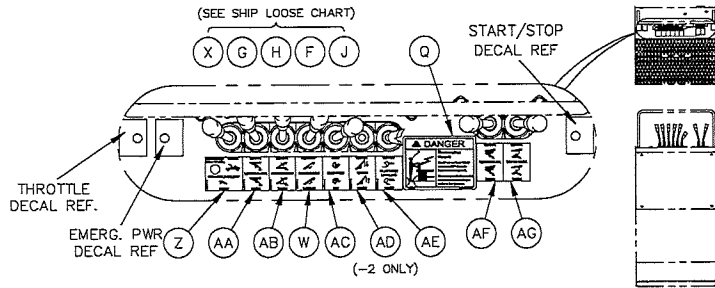
NOTE:  
1) PLACE ITEM "E" NEAR OUTRIGGER CONTROLS.

\* = ITEMS TO BE SHIPPED LOOSE

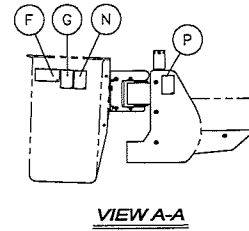
	-7	-6	-5	-4	-3	-2	-1				
* 1	1	1	1	1	1	1	1	H	26010-1	DECAL - STABILITY WARNING	
* 1	1	-	-	-	-	-	-	G	8400-4	DECAL, CONTROL SELECTOR	
* -	-	-	1	1	-	-	-	F	8773-1	DECAL, LIFT/GRND CONTROL SELECT	
SEE NOTE 1. * 2	4	4	2	4	2	4	4	E	12341-1	DECAL, OUTRIGGER OPERATION	
* 2	4	-	2	4	2	4	4	D	8845-1	DECAL, OUTRIGGER CONTROL	
* -	-	-	-	-	1	1	1	C	8400-3	DECAL, CONTROL SELECTOR	
* 2	4	4	2	4	2	4	4	B	4992-1	DECAL, CAUTION OUTRIGGERS	
* 1	1	1	1	1	1	1	1	A	20088-DWG	OUTRIGGER CONTROL DECALS	
QUANTITY									ITEM	PART NO.	DESCRIPTION
LIST OF MATERIAL											
UNLESS OTHERWISE NOTED: TOLERANCES: DECIMALS FRACTIONS ± 1/16 X ± 1 ANGLES ± 1° X ± .03 MACHINED SURFACE FINISH: .125 PROJECTION OF VIEWS:			MANUFACTURING COMPANY WACO TEXAS			DWN. BY DATE MAT 9/21/05		TITLE SCALE 1/8 OUTRIGGER CONTROL DECALS			
THIS PRINT CONTAINS CONFIDENTIAL INFORMATION AND IS SOLE PROPERTY OF TIME MANUFACTURING, AND IS NOT TO BE DISCLOSED, COPIED, OR REPRODUCED WITHOUT EXPRESSED PERMISSION OF THE MANUFACTURING.			MATERIAL SEE ABOVE			EST. WT. # MANUAL - X		SHEET 1 OF 1			
FINISH - - - - -								DWG. NO. 20088-DWG			



REV.	ERRN NO.	DESCRIPTION	BY	ENGR.	CHKD.	APPR.	DATE
①	71778	ITEM "N" WAS 14110-1 AND MADE PICTORIAL CHANGE TO ITEMS "B", "C" AND "AH".	REW	YX	LSK	AMB	4/3/20

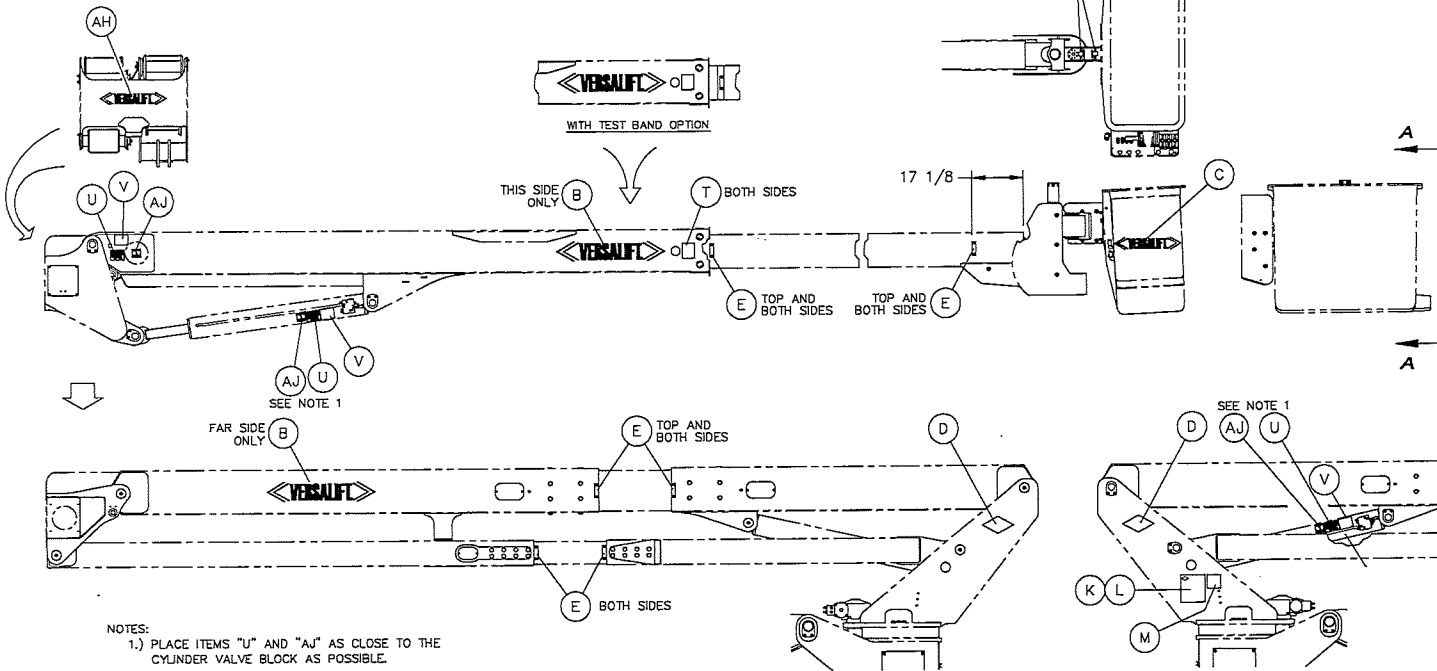


**LOWER CONTROL CONSOLE**  
SCALE.....6X



\* THESE ITEMS TO BE SHIPPED LOOSE.

QTY.	ITEM(S)	DESCRIPTION/LOCATION
1 EACH	F, G, H, J, X	INSTALL NEAR LOWER CONTROLS AND VISIBLE BY OPERATOR.
1 EACH	K, L, M	ON CURB SIDE OF TURRET (AS SHOWN)
1	R	INSTALL NEAR RELIEF VALVE.
1	S	INSTALL AT EACH CORNER OF TRUCK.
1 EACH	Q, W, Z, AA, AB, AC, AD, AE, AF, AG	ON LOWER CONTROL CONSOLE (AS SHOWN)



NOTES:  
1.) PLACE ITEMS "U" AND "AJ" AS CLOSE TO THE CYLINDER VALVE BLOCK AS POSSIBLE.

DASH NO.	DESCRIPTION	CODE
-1	DECAL PLACEMENT - WITHOUT JIB WINCH - LIFT ON LIFT ELEVATOR - VST-7500	DE-1280-44
-2	DECAL PLACEMENT - WITH JIB WINCH - LIFT ON LIFT ELEVATOR - VST-7500	DE-1280-45

	-2	-1			
	3	3	AJ	100B175-1	DECAL - HAND/ARM CRUSH WARNING
	1	1	AH	4541-3	DECAL - "VERSALIFT" (SMALL)
*	1	1	AG	1000476-1	DECAL - LWR AND RAISE UPR ELEV
*	1	1	AF	1000475-1	DECAL - LWR AND RAISE LWR ELEV
*	1	1	AE	1000474-1	DECAL - LWR AND RAISE PLATFORM
*	1	-	AD	1000473-1	DECAL - LWR AND RAISE WINCH
*	1	1	AC	1000472-1	DECAL - CCW AND CW ROTATION
*	1	1	AB	1000147-1	DECAL - LWR AND RAISE OUTER BM
*	1	1	AA	1000470-1	DECAL - LWR AND RAISE LWR BM
*	1	1	Z	1006227-1	DECAL - UPPER AND LOWER CNTRL
*	2	2	Y	30593-1	DECAL - LANYARD ATTACHMENT
	REF	REF	X	33565-1	DECAL - DANGER ELECTROCUTION
*	1	1	W	1000146-1	DECAL - RET AND EXT INNER BOOM
*	3	3	V	7500-1	DECAL - HOLDING VALVE
*	3	3	U	100B174-1	DECAL - EMGY LWRING BLEEDER
*	2	2	T	16837-1	DECAL - DANGER INSPECTION HOLE
*	4	4	S	4542-2	DECAL - ELECTROCUTION
*	1	1	R	7584-1	DECAL - RELIEF ADJUSTMENT
*	1	1	Q	35409-1	DECAL - DANGER ELECTROCUTION
*	1	1	P	14014-1	DECAL - PLATFORM INSTRUCTION
*	1	1	N	14110-3	DECAL - ELECTROCUTION HAZARD
*	1	1	M	12337-1	DECAL - OWNER TRANSFER
*	1	1	L	1006487-1	DATA PLATE BACKING
*	1	1	K	1006486-1	DATA PLATE
*	1	1	J	13144-1	DECAL - CAUTION LOWER BOOM
*	1	1	H	4542-4	DECAL - DANGER ELECTROCUTION
*	2	2	G	4542-5	DECAL - CAUTION OPERATION
*	2	2	F	4542-12	DECAL - DANGER QUALIFIED OPERATOR
	16	16	E	5098-1	DECAL - INSULATED SECTION
	2	2	D	426-011	VERSALIFT NAME PLATE
	1	1	C	4541-1	DECAL - "VERSALIFT" (SMALL)
	2	2	B	4541-2	DECAL - "VERSALIFT" (LARGE)
	2	2	A	1006498-DWG	DECAL PLACEMENT DRAWING
	QTY.	QTY.	ITEM	PART NO.	DESCRIPTION

UNLESS OTHERWISE NOTED: TOLERANCES: DECIMALS FRACTIONS ± 1/16 ± .005 ANGLES ± .1 ± .03 MACHINED SURFACE FINISHES: .125 PROJECTION OF VIEWS: ① ALL DIMENSIONS ARE IN INCHES

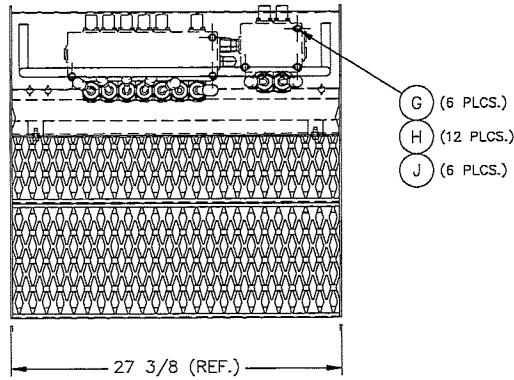
THIS PRINT CONTAINS CONFIDENTIAL INFORMATION AND IS SOLE PROPERTY OF TIME MANUFACTURING COMPANY. IT IS NOT TO BE DISCLOSED, COPIED, OR REPRODUCED WITHOUT EXPRESS PERMISSION OF THE MANUFACTURING COMPANY.

**TIME** MANUFACTURING COMPANY  
WACO TEXAS

DWN. BY DATE TITLE  
MAS 2/9/16 DECAL PLACEMENT

SCALE 1=40  
EST WT # MANUAL -  
FINISH SHEET 1 OF 1 DWG. NO. 1006498-DWG

REV.	ETCH NO.	DESCRIPTION	BY	CHKD.	APPR.	DATE
62018		FIRST RELEASE	MAS	DJH	SKV	2/16/16

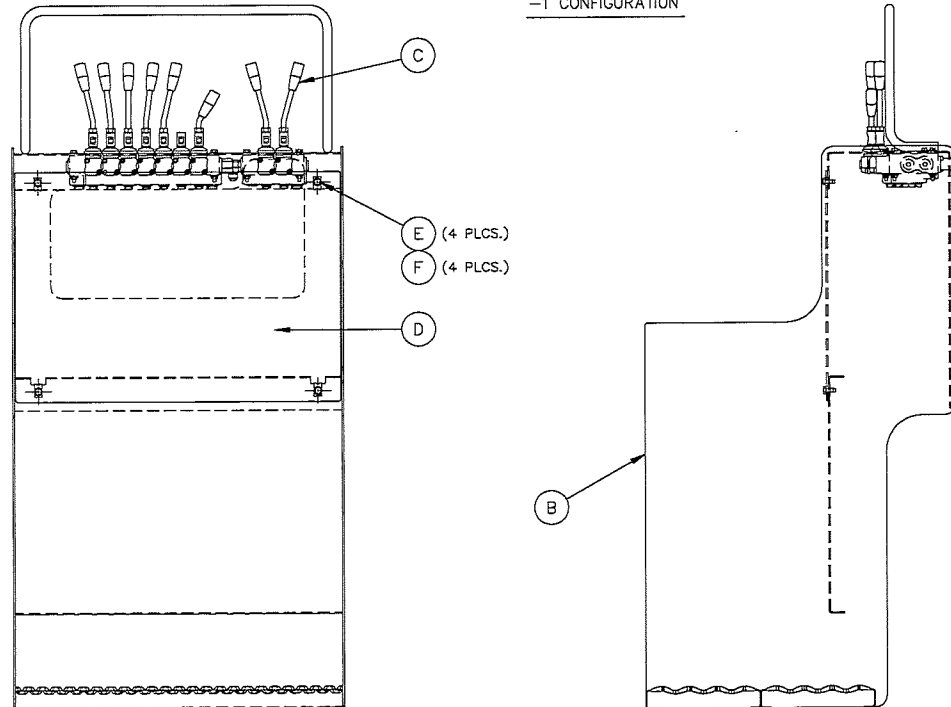


DASH NO.	DESCRIPTION	CODE
-1	LOWER CONTROL CONSOLE	HYD-1280-18
-2	LOWER CONTROL CONSOLE	HYD-1280-19

\* THESE ITEMS TO BE SHIPPED LOOSE.

QTY.	ITEM	DESCRIPTION/LOCATION
3	J	1/4-NC LOCKNUT
6	H	1/4 HARDENED WASHER
3	G	1/4-NC X 2 1/2 LG HHCS

-1 CONFIGURATION

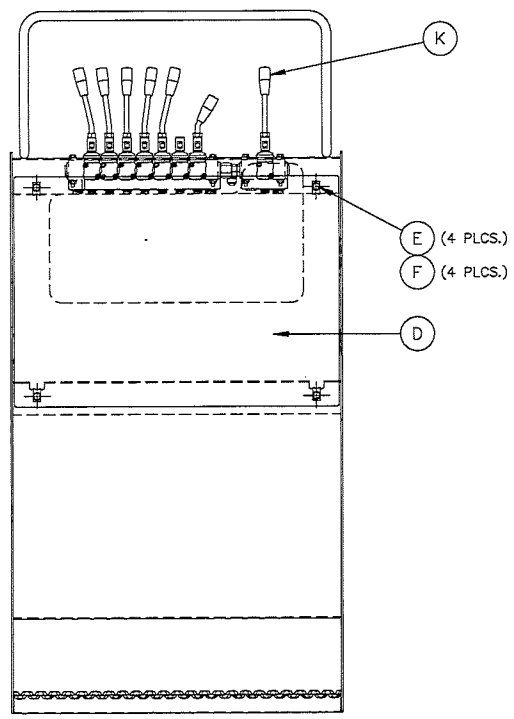
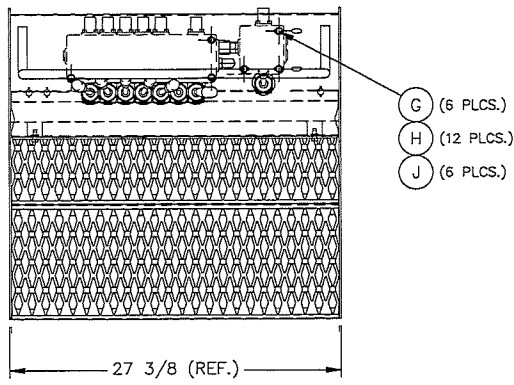


-2		-1			
QTY.	ITEM	PART NO.	DESCRIPTION		
1	1	P 1001769-1	LOWER CONTROL VALVE BRACKET		
2	2	N 42005-3	3/8-NC LOCKNUT		
4	4	M 44013-6	3/8 HARDENED WASHER		
2	2	L 40004-7	3/8-NC X 1 1/2 LG HHCS		
1	-	K 1006053-2	CONSOLE VALVE ASSEMBLY		
*	6	6 J 42005-1	1/4-NC LOCKNUT		
*	12	12 H 44013-7	1/4 HARDENED WASHER		
*	6	6 G 40002-11	1/4-NC X 2 1/2 LG HHCS		
*	4	4 F 40076-12	5/16-NC X 3/4 LG HHTFS		
*	4	4 E 42032-1	U TYPE SPEED NUT 5/16-NC		
*	1	1 D 1000240-1	CONSOLE COVER		
-	1	C 1006053-1	CONSOLE VALVE ASSEMBLY		
*	1	1 B 1000235-1	CONTROL CONSOLE WELDMENT		
*	2	2 A 1006539-DWG	LOWER CONTROL CONSOLE ASSY		
QTY.	QTY.	ITEM	PART NO.	DESCRIPTION	

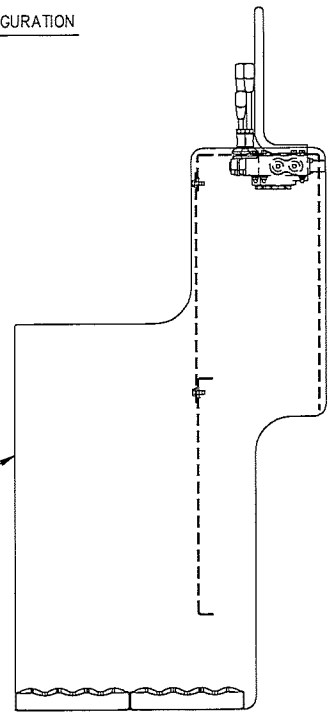
LIST OF MATERIAL

<small>UNLESS OTHERWISE NOTED: TOLERANCES: DECIMALS FRACTIONS ± 1/16 X ± .1 ANGLES ± 1' XX ± .03 MACHINED SURFACE FINISHES: .125 PROJECTION OF VIEWS: ① ALL DIMENSIONS ARE IN INCHES</small>		MANUFACTURING COMPANY	DRAWN BY	DATE	<b>LOWER CONTROL CONSOLE ASSEMBLY</b>
		WACO TEXAS	MAS	2/16/16	
<small>THIS PRINT CONTAINS CONFIDENTIAL INFORMATION AND IS SOLE PROPERTY OF TIME MANUFACTURING, AND IS NOT TO BE DISCLOSED, COPIED, OR REPRODUCED WITHOUT EXPRESSED PERMISSION OF TIME MANUFACTURING.</small>	MATERIAL	EST WT #	SCALE	MANUAL	
FINISH			B	1=10	
			SHEET	DWG. NO.	
			1 OF 3	1006539-DWG	

REV



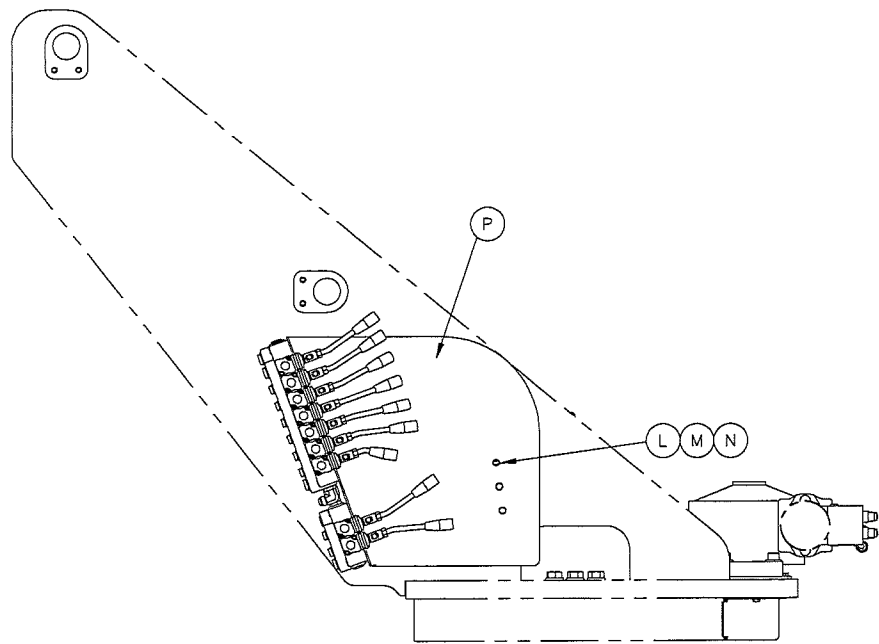
-2 CONFIGURATION



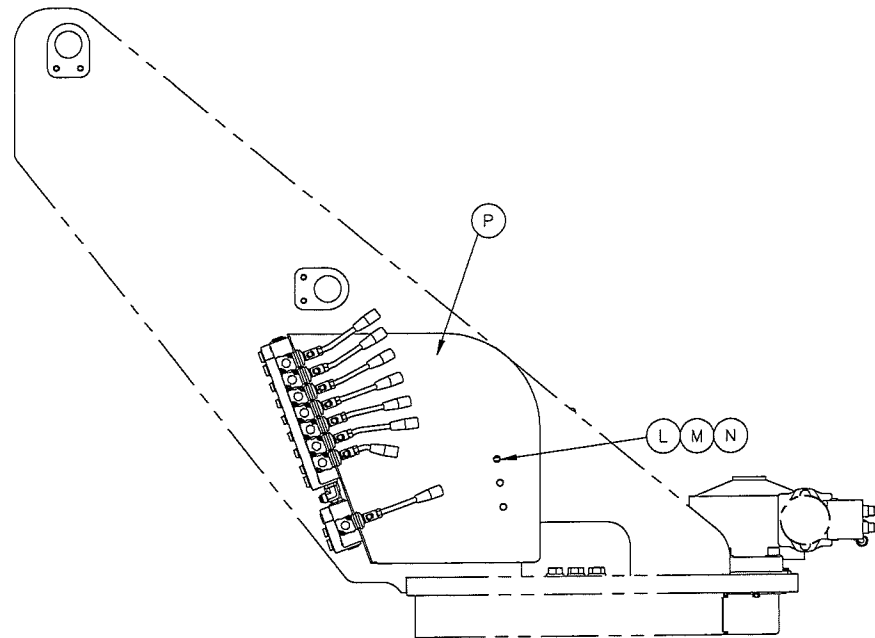
UNLESS OTHERWISE NOTED: TOLERANCES: DECIMALS FRACTIONS ± 1/16 X ± .1 ANGLES ± 1° XX ± .03 XXX ± .005 MACHINED SURFACE FINISHES: .15" PROJECTION OF VIEWS: ALL DIMENSIONS ARE IN INCHES	MANUFACTURING COMPANY WACO TEXAS	DWN. BY MAS	DATE 2/16/16	TITLE LOWER CONTROL CONSOLE ASSEMBLY
		MATERIAL ---	EST WT ---	SCALE 1=10

REV.

SHIPPING / TESTING CONFIGURATION



-1 CONFIGURATION



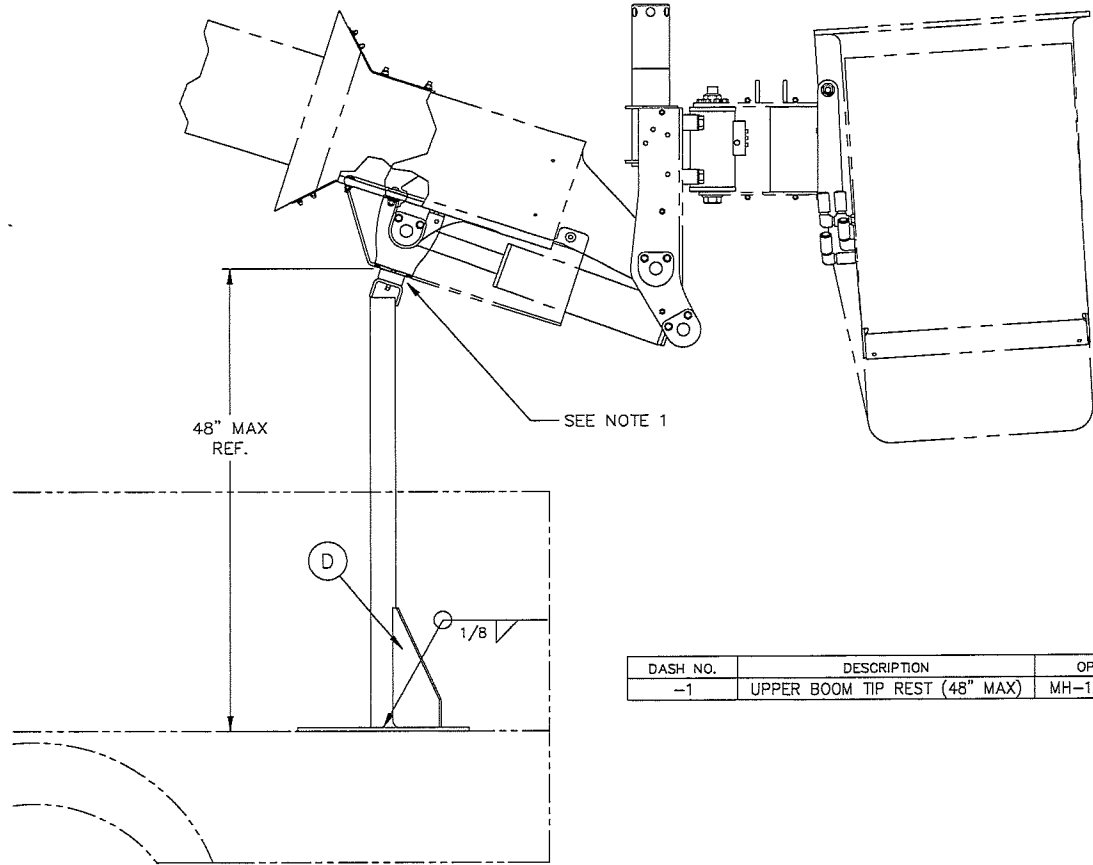
-2 CONFIGURATION

NOTE:

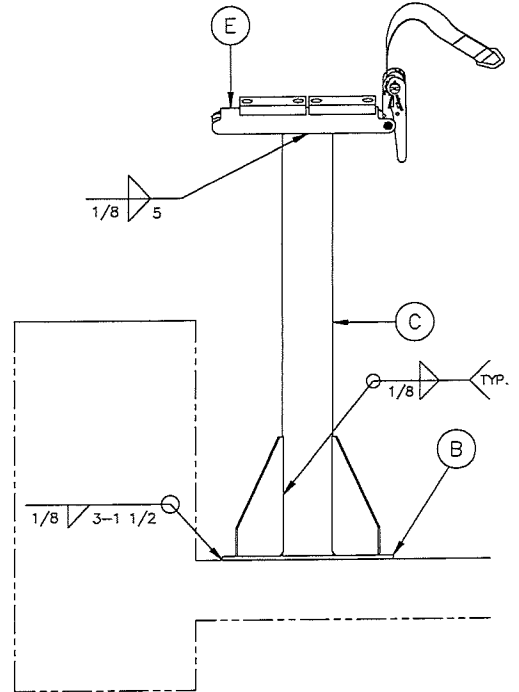
- 1.) USE ITEMS "G", "H", AND "J" TO MOUNT CONTROL VALVE TO ITEM "P" FOR TESTING AND SHIPPING. REMOVE AND REUSE THESE ITEMS TO MOUNT VALVE TO CONSOLE FOR FINAL INSTALLATION.
- 2.) USE ITEMS "L", "M", AND "N" TO MOUNT ITEM "P" TO TURRET.

<small>UNLESS OTHERWISE NOTED:                  TOLERANCES: DECIMALS                  FRACTIONS: 1/16 X ± .1                  ANGLES: 1/2 XXX ± .005                  MACHINED SURFACE FINISHES: .125                  PROJECTION OF VIEWS:                   ALL DIMENSIONS ARE IN INCHES</small>	 MANUFACTURING COMPANY WACO TEXAS	DWN. BY	DATE	TITLE
		MAS	2/16/16	LOWER CONTROL ASSEMBLY
<small>THIS PRINT CONTAINS CONFIDENTIAL INFORMATION AND IS SOLE PROPERTY OF THE MANUFACTURING AND IS NOT TO BE DISCLOSED, COPIED, REPRODUCED WITHOUT EXPRESSED PERMISSION OF THE MANUFACTURING.</small>	MATERIAL FINISH	SIZE	SCALE	
		B	1=10	
		EST WT #	MANUAL	
		SHEET	DWG. NO.	
		3 OF 3	1006539-DWG	

REV.	ERDN NO.	DESCRIPTION	BY	CHKD.	APPR.	DATE
1	61500	FIRST RELEASE	NTR	DJH	ARR	10/2/14



DASH NO.	DESCRIPTION	OPTION
-1	UPPER BOOM TIP REST (48" MAX)	MH-1280-19



\* THESE ITEMS ARE SHIPPED LOOSE.

QTY.	ITEM	PART NO.	DESCRIPTION
-1			
1	H	12865-1	FLAT
1	G	8993-3	BOOM TIE DOWN STRAP ASSEMBLY
1	F	22342-1	BOOM REST
*	1	E	1005462-1 H.D. BOOM REST ASSEMBLY
*	2	D	1001536-1 BOOM REST GUSSET PLATE
*	1	C	10271-3 BOOM SUPPORT TUBE (45" LG)
*	1	B	1005461-1 BOOM REST SUPPORT PLATE
2	A	1005460-DWG	DWG., UPPER BOOM TIP REST INSTALL

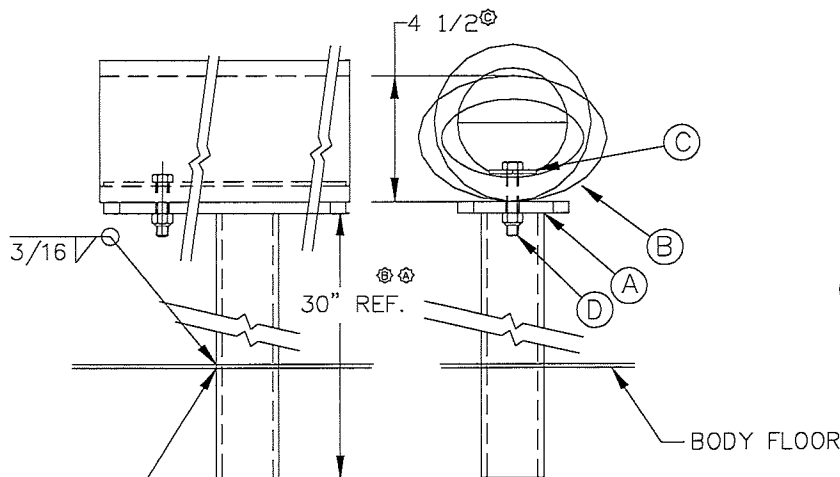
- NOTES:
1. POSITION THE BOOM REST AT THE PAD SUPPORT LOCATED ON THE BOOM TIP COVER.
  2. CUT BOOM SUPPORT TUBE (ITEM "C") TO THE DESIRED LENGTH.
  3. WELD AS SHOWN AND PAINT.
  4. ITEMS "F", "G", AND "H" ARE USED ON THE SHIPPING SKID.

<small>UNLESS OTHERWISE NOTED:                  TOLERANCES: DECIMALS                  FRACTIONS ± 1/16 XX ± .03                  ANGLES ± 1° XXX ± .050                  MACHINED SURFACE FINISHES-10"                  PROJECTION OF VIEWS                  ALL DIMENSIONS ARE IN INCHES</small>		MANUFACTURING COMPANY WACO TEXAS	DRN. BY DATE NTR 10/2/14	TITLE UPPER BOOM TIP REST INSTALLATION
		MATERIAL SEE ABOVE	SIZE SCALE B 1/12	SHEET 1 OF 1

REV.	ERGN NO.	DESCRIPTION	BY	CHKD.	APPR.	DATE
①	57499	IN OPTION CHART, PS-922 WAS -2 AND PS-11 WAS -3 IN ERROR.	DJH	SS	JC	12/22/09

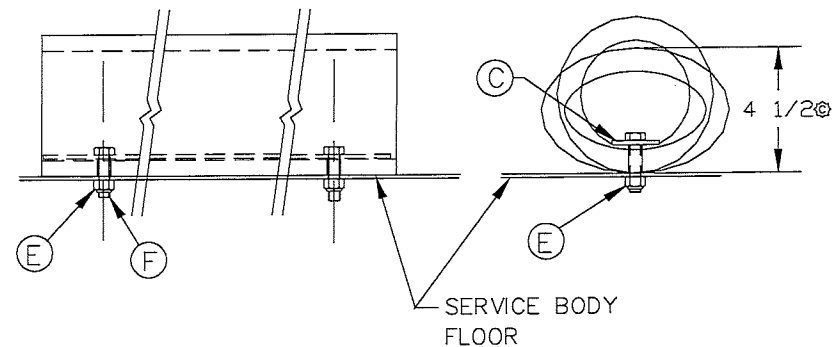
1. LOWER BOOMS TO STOWED POSITION.
2. LEVEL PLATFORM IF NECESSARY.
3. POSITION AND MARK PLATFORM SUPPORT LOCATION. LOCATE PLATFORM SUPPORT UNDER PLATFORM CENTERED FRONT TO REAR WITHIN 2 IN. AND CENTERED SIDE TO SIDE WITHIN 3 IN.
4. PLATFORM SHOULD COMPRESS RUBBER TUBE TO DIMENSION SHOWN.
5. MOUNT TUBE OR SUPPORT AS SHOWN.

DASH NO.	DESCRIPTION	OPTION
-1	PLATFORM SUPPORT INSTALLATION (APPROX. 5" HI MAX.)	PS-922
-2	PLATFORM SUPPORT INSTALLATION (APPROX. 23" HI MAX.)	PS-11



CUT HOLE IN FLOOR FOR 2 IN. SQ. TUBE AND BRACE TO BODY CROSS MEMBERS FOR RIGIDITY OR CUT TO REQUIRED LENGTH AND BRACE TO BODY FLOOR FOR RIGIDITY.

PS-11 INSTALLATION



PS-922 INSTALLATION

\* = ITEMS TO BE SHIPPED LOOSE.

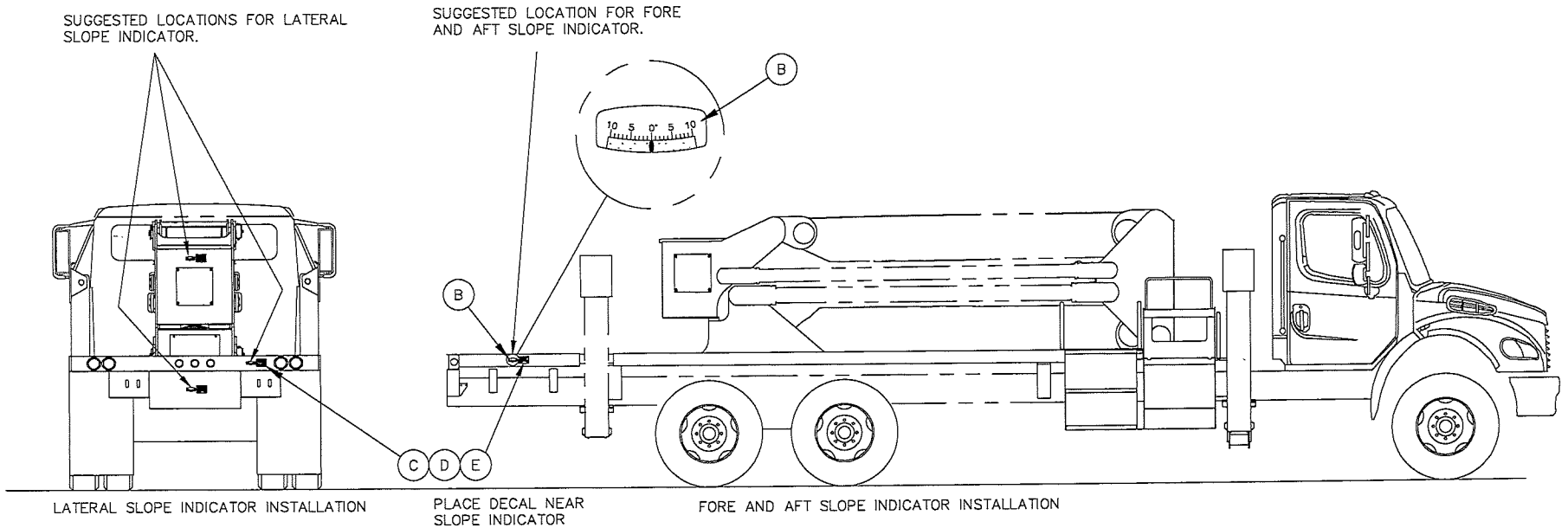
QTY.	QTY.	ITEM	PART NO.	DESCRIPTION
①*	1	1	G	14172-DWG PLATFORM SUPPORT INSTALL. DWG.
*	-	2	F	40004-7 3/8-NC x 1 1/2 HHCS
*	2	2	E	42005-3 3/8-NC LOCKNUT
*	2	-	D	40004-8 3/8-NC x 1 3/4 HHCS
*	1	1	C	12873-1 STRAP
②*	1	1	B	12872-1 TUBE
*	1	-	A	13101-2 SUPPORT ASSEMBLY

LIST OF MATERIAL

<small>UNLESS OTHERWISE NOTED:          TOLERANCES: DECIMALS          FRACTIONS ± 1/16          ANGLES ± 1°          MACHINED SURFACE FINISHES:          PROJECTION OF VIEWS: ALL DIMENSIONS ARE IN INCHES</small>		MANUFACTURING COMPANY WACO TEXAS	DRN. BY: DLB	DATE: 10/03/94	TITLE: PLATFORM SUPPORT INSTALLATION
			MATERIAL: SEE ABOVE	EST WT #: -	

THIS PRINT CONTAINS CONFIDENTIAL INFORMATION AND IS SOLE PROPERTY OF TIME MANUFACTURING AND IS NOT TO BE DISCLOSED, COPIED, OR REPRODUCED WITHOUT EXPRESSED PERMISSION OF TIME MANUFACTURING.

REV.	ERCH NO.	DESCRIPTION	BY	CHKD.	APPR.	DATE
62445		FIRST RELEASE	DEF	DJH	ARH	02/12/16



NOTE:  
SLOPE INDICATORS SHALL BE INSTALLED TO INDICATE THE LEVEL OF THE ROTATION BEARING RELATIVE TO THE GROUND.

DASH NO.	DESCRIPTION	OPTION
-1	SLOPE INDICATORS (2) (FOR LIFT ELEVATOR)	SD-1200-52
-2	SLOPE INDICATORS (2) (FOR LIFT ELEVATOR) SPANISH	SD-1200-52S
-3	SLOPE INDICATORS (2) (FOR LIFT ELEVATOR) PORTUGUESE	SD-1200-52P

NOTE:  
\* INDICATES PART IS SHIPPED LOOSE.

	-3	-2	-1			
*	2	-	-	E	33656-9	DECAL SLOPE WARNING (PORTUGUESE)
*	-	2	-	D	33656-8	DECAL SLOPE WARNING (SPANISH)
*	-	-	2	C	33656-7	DECAL SLOPE WARNING
*	2	2	2	B	33657-3	SLOPE INDICATOR 10 DEGREE
*	1	1	1	A	1006622-DWG	SLOPE INDICATOR INSTALLATION
	QTY.	QTY.	QTY.	ITEM	PART NO.	DESCRIPTION

LIST OF MATERIAL

UNLESS OTHERWISE NOTED: TOLERANCES: FRACTIONS ± 1/16 DECIMALS .XX ± .03 ANGLES ± 1° .XXX ± .005 MACHINED SURFACE FINISHES: 125 PROJECTION OF VIEWS: ① ALL DIMENSIONS ARE IN INCHES	TIME MANUFACTURING COMPANY WACO TEXAS	DWR. BY	DATE	TITLE
		DEF	02/12/16	SLOPE INDICATOR INSTALLATION
THIS PRINT CONTAINS CONFIDENTIAL INFORMATION AND IS SOLE PROPERTY OF TIME MANUFACTURING AND IS NOT TO BE DISCLOSED, COPIED, OR REPRODUCED WITHOUT EXPRESS PERMISSION OF TIME MANUFACTURING.	MATERIAL SEE ABOVE FINISH ---	SIZE	SCALE	
		B	1-40	
		EST WT	MANUAL	
		SHEET	DWG. NO.	
		1 OF 1	1006622-DWG	



REV.	ERCN NO.	DESCRIPTION	BY	CHKD.	APPR.	DATE
6	63008	FIRST RELEASE	ARH	SS	SKV	1/25/17

DASH NO.	DESCRIPTION	OPTION
-1	ARC FLASH RATED LG BODY HARNESS AND 4FT. LANYARD	SD-18
-2	ARC FLASH RATED XL BODY HARNESS AND 4FT. LANYARD	SD-19
-3	LARGE BODY HARNESS AND 4FT. LANYARD	SD-1200-48
-4	XL BODY HARNESS AND 4FT. LANYARD	SD-1200-49
-5	XL BODY HARNESS AND 4FT. LANYARD (MSA)	SD-1200-53

NOTE: ARC FLASH RATING REQUIRED FOR USE ON INSULATED LIFTS

	-5	-4	-3	-2	-1	* THESE ITEMS TO BE SHIPPED LOOSE.		
*	1	-	-	-	-	J	89145-5	XL FULL BODY HARNESS (MSA)
*	1	-	-	-	-	H	89069-3	4 FT. LANYARD (MSA)
*	-	1	-	-	-	G	89145-4	XL FULL BODY HARNESS
*	-	1	1	-	-	F	89069-2	4 FT. LANYARD
*	-	-	1	-	-	E	89145-3	FULL BODY HARNESS
*	-	-	-	1	-	D	89145-2	XL BODY HARNESS ARC FLASH
*	-	-	-	1	1	C	89069-1	4 FT. LANYARD ARC FLASH RATED
*	-	-	-	-	1	B	89145-1	FULL BODY HARNESS ARC FLASH
*	1	1	1	1	1	A	1007299-DWG	BODY HARNESS AND LANYARD
	QTY.	QTY.	QTY.	QTY.	QTY.	ITEM	PART NO.	DESCRIPTION

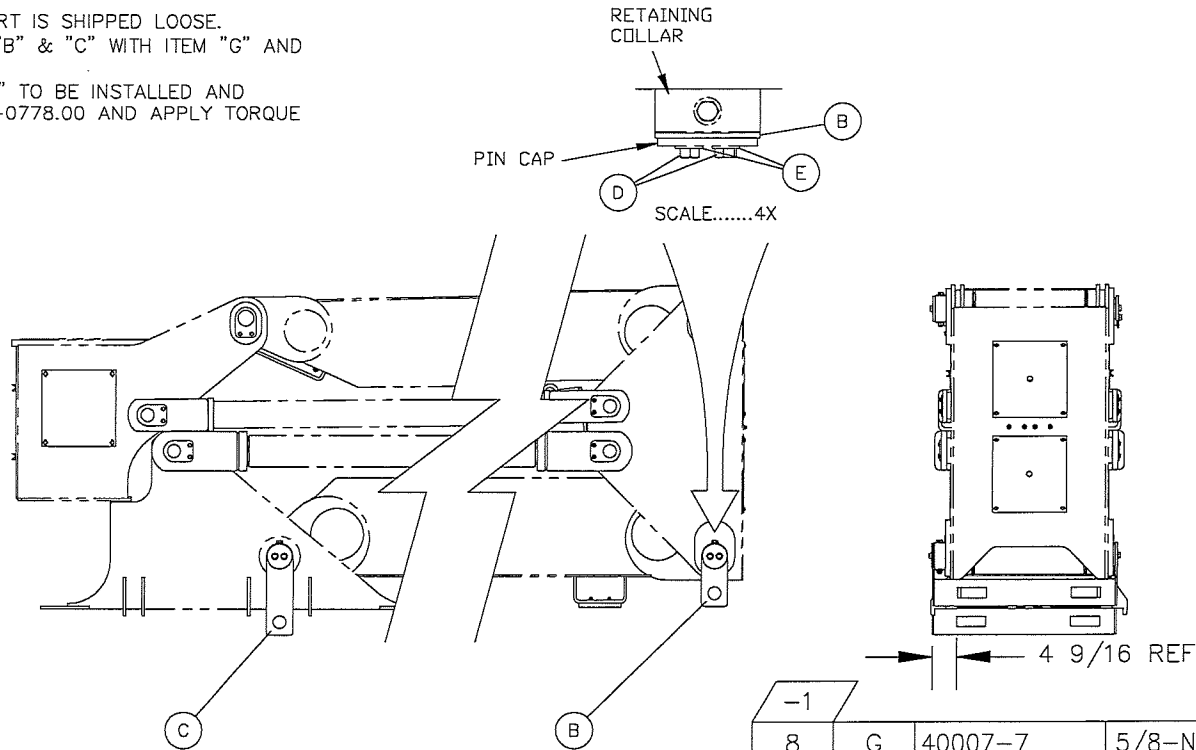
LIST OF MATERIAL

UNLESS OTHERWISE NOTED: TOLERANCES: DECIMALS FRACTIONS ± 1/16 X ± .1 ANGLES ± .XX ± .03 .XXX ± .005 MACHINED SURFACE FINISHES = 125/ PROJECTION OF VIEWS  ALL DIMENSIONS ARE IN INCHES	 MANUFACTURING COMPANY WACO TEXAS	DWN. BY	DATE	TITLE FULL BODY HARNESS AND LANYARD
		ARH	1/25/17	
		SIZE A	SCALE 1/1	
MATERIAL SEE LIST OF MATERIALS	FINISH	EST WT #	MANUAL	DWG. NO. 1007299-DWG
		SHEET 1 OF 1		

REV.	ERCN NO.	DESCRIPTION	BY	CHKD.	APPR.	DATE
62723		FIRST RELEASE	DTG	SS	SKV	8/1/16

NOTES:

- 1.) \* INDICATES PART IS SHIPPED LOOSE.
- 2.) INSTALL ITEMS "B" & "C" WITH ITEM "G" AND EXISTING WASHERS.
- 3.) ITEMS "D" & "E" TO BE INSTALLED AND TORQUED PER TMC-0778.00 AND APPLY TORQUE SEAL (ITEM "F").



DASH NO.	DESCRIPTION	OPTION
-1	25-33FT ELEVATOR (W/ 5 IN. RISER) SHIPPING SKID	SK-1341-6

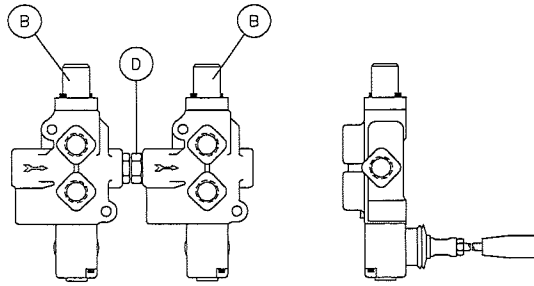
QTY.	ITEM	PART NO.	DESCRIPTION
-1			
8	G	40007-7	5/8-NC X 1 1/2 LG HHCS
*	1	F	84006-2 TORQUE SEAL
*	8	E	44013-1 5/8 HARDENED WASHER
*	8	D	40007-6 5/8-NC X 1 1/4 LG HHCS
1	C	1007070-2	SKID WELDMENT
1	B	1007070-1	SKID WELDMENT
1	A	1007072-DWG	SHIPPING SKID ASSEMBLY

LIST OF MATERIAL

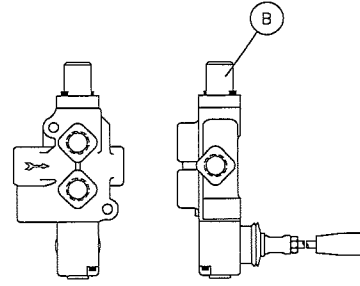
UNLESS OTHERWISE NOTED: TOLERANCES: DECIMALS FRACTIONS ± 1/16 .X ± .1 ANGLES ± .XX ± .03 .XXX ± .005 MACHINED SURFACE FINISHES = 125/ PROJECTION OF VIEWS ALL DIMENSIONS ARE IN INCHES		MANUFACTURING COMPANY	DWN. BY	DATE	TITLE
		WACO TEXAS	DTG	8/1/16	
THIS PRINT CONTAINS CONFIDENTIAL INFORMATION AND IS SOLE PROPERTY OF TIME MANUFACTURING, AND IS NOT TO BE DISCLOSED, COPIED, OR REPRODUCED WITHOUT EXPRESSED PERMISSION OF TIME MANUFACTURING.	MATERIAL		EST WT #	MANUAL	
	FINISH		SHEET	1 OF 1	DWG. NO. 1007072-DWG

REV.	ERON NO.	DESCRIPTION	BY	CHKD.	APPR.	DATE
①	55530	FIRST RELEASE	LBR	D.JH	SRS	3-20-06
②	56900	ADDED ASTERISK TO INDICATE ITEMS TO BE SHIP. AND SHIP NOTE.	REW	SS/D.JH	JC	02/11/08

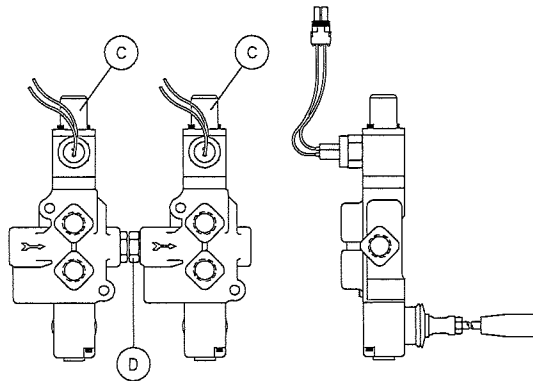
REV.	ERON NO.	DESCRIPTION	BY	CHKD.	APPR.	DATE
③	59618	DWG P/N WAS 20330-SEE ABOVE. OPTION VK-1400-3 DESCRIPTION WAS FOR DUAL OUTRIGGERS (WITH OUTRIGGER WARNING SWITCH) AND VK-1400-4 DESCRIPTION WAS FOR SINGLE OUTRIGGERS (WITH OUTRIGGER WARNING SWITCH).	REW	D.JH	SKV	11/28/11



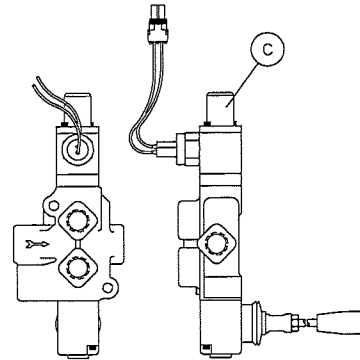
DUAL OUTRIGGER CONTROL VALVE ASSEMBLY  
STANDARD  
-1 CONFIGURATION



SINGLE OUTRIGGER CONTROL VALVE ASSEMBLY  
STANDARD  
-2 CONFIGURATION



DUAL OUTRIGGER CONTROL VALVE ASSEMBLY  
WITH OUTRIGGER WARNING SWITCH  
-3 CONFIGURATION



SINGLE OUTRIGGER CONTROL VALVE ASSEMBLY  
WITH OUTRIGGER WARNING SWITCH  
-4 CONFIGURATION

DASH NO.	DESCRIPTION	CODE
-1	FOR DUAL OUTRIGGERS (STANDARD)	VK-1400-1
-2	FOR SINGLE OUTRIGGERS (STANDARD)	VK-1400-2
③ -3	DUAL OUTRIGGER CONTROL VALVE KIT WITH MICROSWITCH	VK-1400-3
③ -4	SINGLE OUTRIGGER CONTROL VALVE KIT WITH MICROSWITCH	VK-1400-4

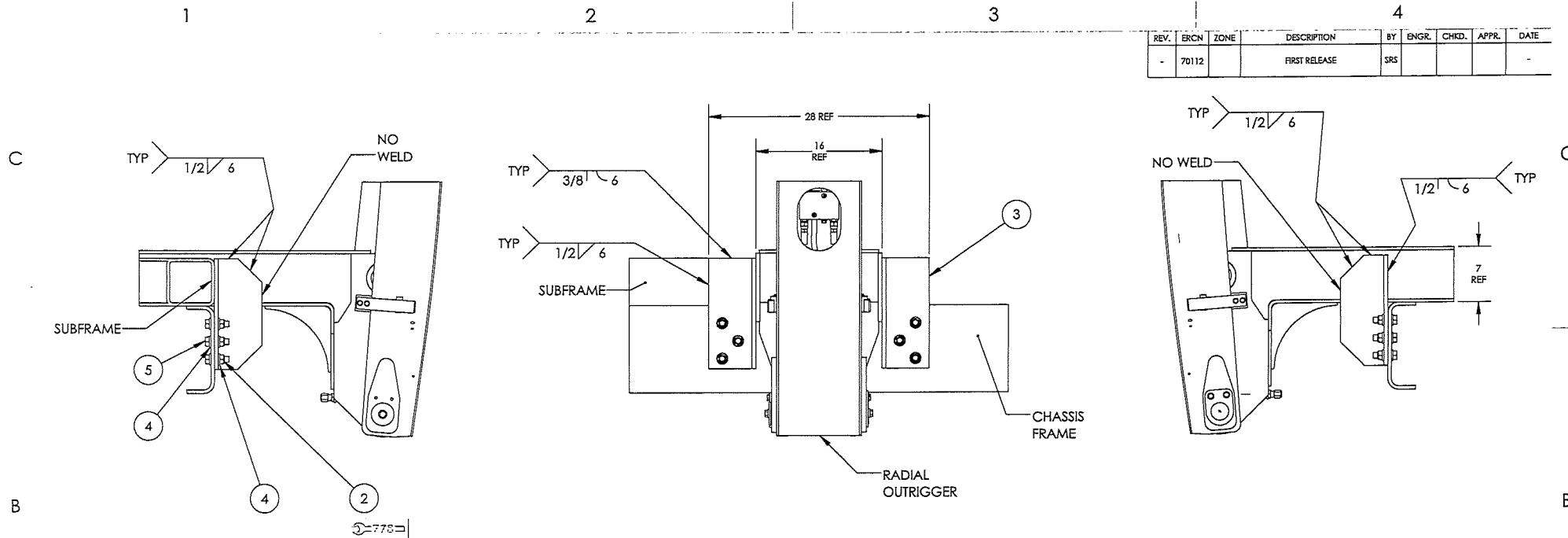
NOTE:  
1.) CONTROL VALVES TO BE MOUNTED IN A LOCATION WHERE OUTRIGGERS CAN BE SEEN DURING OPERATION.

\* = ITEMS TO BE SHIPPED LOOSE

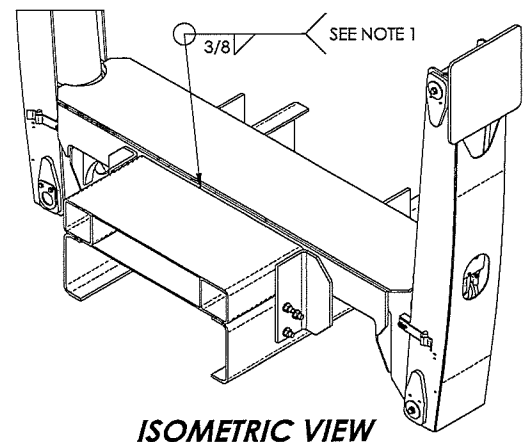
	-4	-3	-2	-1	ITEM	PART NO.	DESCRIPTION
*	2	2	-	2	D	50180-3	#8 O-RING TO #8 O-RING UNION
*	2	4	-	-	C	54022-14	CONTROL VALVE W/ HANDLE AND SWITCH
*	-	-	2	4	B	54022-8	CONTROL VALVE W/ HANDLE
	1	1	1	1	A	20330-DWG	DWG O/R CONTROL VALVE KITS
	QTY.	QTY.	QTY.	QTY.	ITEM	PART NO.	DESCRIPTION

LIST OF MATERIAL

UNLESS OTHERWISE NOTED: TOLERANCES: DECIMALS FRACTIONS ± 1/16 ANGLES ± .1 X ± .1 XX ± .03 XXX ± .005	DATE	TITLE
MACHINED SURFACE FINISHES = .125 PROJECTION OF VIEWS ALL DIMENSIONS ARE IN INCHES	3-15-06	OUTRIGGER CONTROL VALVE KIT
THIS PRINT CONTAINS CONFIDENTIAL INFORMATION AND IS SOLE PROPERTY OF TIME MANUFACTURING, AND IS NOT TO BE DISCLOSED, COPIED, OR REPRODUCED WITHOUT EXPRESSED PERMISSION OF THE MANUFACTURING.	SCALE 1=4	
TIME MANUFACTURING COMPANY WACO TEXAS	EST WT #	MANUAL
MATERIAL SEE MATERIAL LIST	FINISH	
	SHEET 1 OF 1	DWG. NO. 20330-DWG



REV.	ERCN	ZONE	DESCRIPTION	BY	ENGR.	CHKD.	APPR.	DATE
-	70112		FIRST RELEASE	SRS				-



**ISOMETRIC VIEW**

NOTE:  
\* INDICATES PART IS SHIPPED LOOSE

ITEM NO.	PART NUMBER	DESCRIPTION	QUANTITY
* 5	40104-11	3/4-NC X 2 1/2 LG. HHCS GR8	12
* 4	44013-4	3/4" HARDENED WASHER	24
* 3	1007454-1	ANGLE SHEAR PLATE	4
* 2	42027-8	3/4-NC HEX LOCKNUT GRC	12
* 1	MH-1400-49-DWG	DRAWING, RADIAL OR MTG HARDWARE	1

- NOTES:
1. WELD SUBFRAME TO OUTRIGGERS, ALL AROUND, BEFORE INSTALLING SHEAR PLATES.
  2. WELD SHEAR PLATES (ITEM "3") AS SHOWN.
  3. MATCH DRILL THREE 3/4 HOLES IN EACH SHEAR PLATE AS SHOWN. INSTALL FASTENERS AND TORQUE PER TMC-0778.00.
  4. ALL WELDING MUST MEET OR EXCEED THE STRENGTH AND ELONGATION OF ER70S-6 WIRE OR ER7018 ROD (60,000 PSI YIELD AND 25% ELONGATION).

UNLESS OTHERWISE NOTED:  
 TOLERANCES: DECIMALS  
 FRACTIONAL: 1/16 XX ±.03  
 ANGULAR: ±1° .00X ±.005  
 MACHINED SURFACE FINISHES: 125"  
 ALL DIMENSIONS ARE IN INCHES  
 PROJECTION OF VIEWS: [Symbol]  
 THIS PRINT CONTAINS CONFIDENTIAL INFORMATION AND IS THE SOLE PROPERTY OF TIME MANUFACTURING AND IS NOT TO BE FINISH, DISCLOSED, COPIED, OR REPRODUCED WITHOUT THE EXPRESSED PERMISSION OF TIME MANUFACTURING.

MATERIAL NO. [Symbol]  
 MATERIAL DESCRIPTION: RADIAL OUTRIGGER MOUNTING HARDWARE

**TIME**  
 MANUFACTURING COMPANY

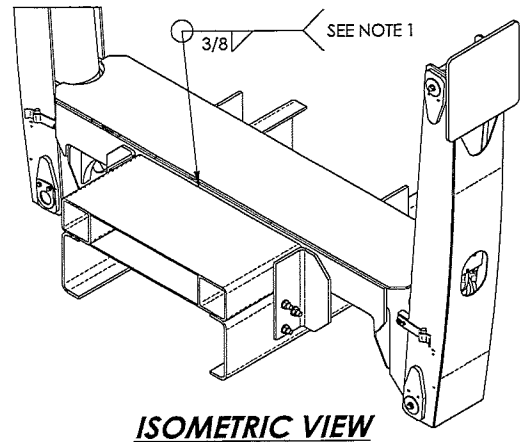
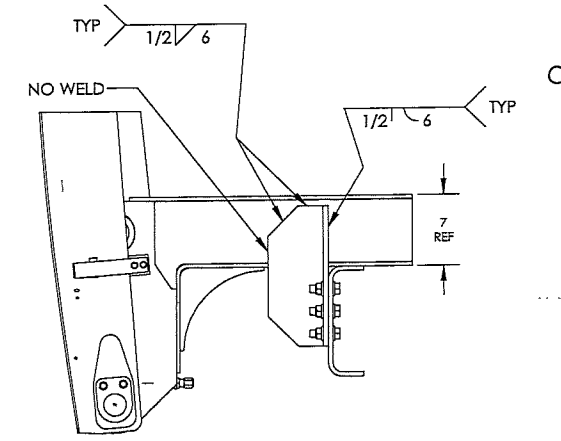
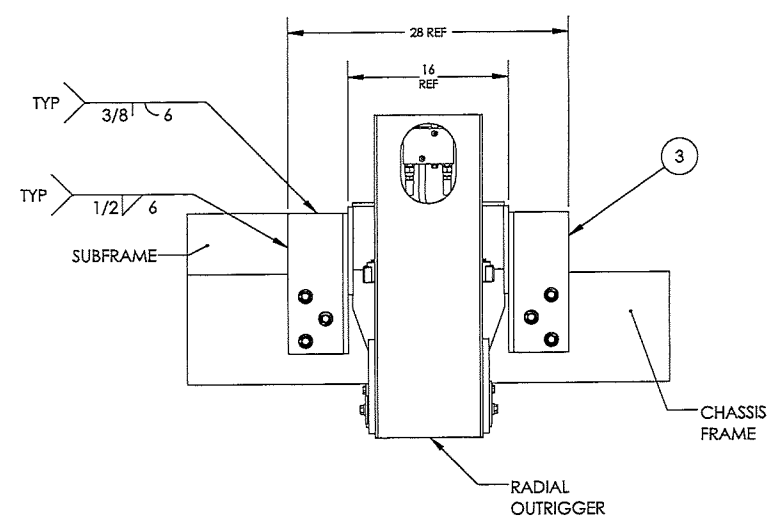
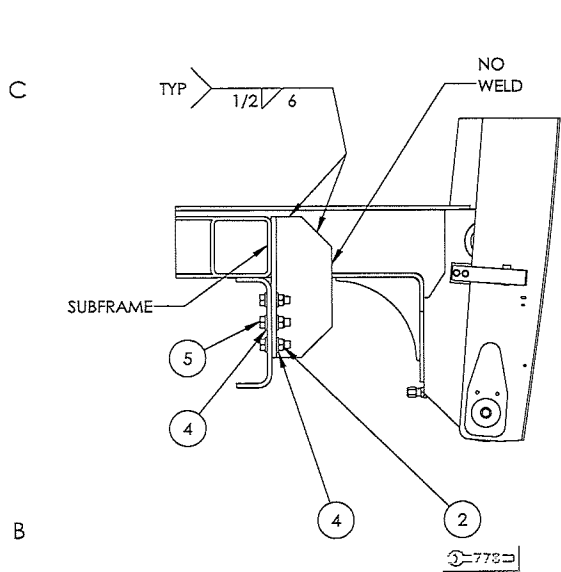
DWN. BY: SRS DATE: 01/10/2018 SHEET: B SCALE: 1:12 OF 1 DWG. NO.: MH-1400-49 REV.: -

APPROXIMATE WEIGHT OF MOUNTING HARDWARE = 95 LBS (43 KG)

LEGEND

[Symbol]	TORQUE PER CHART TMC-0778.00
----------	------------------------------

REV.	ERCN	ZONE	DESCRIPTION	BY	ENGR.	CHKD.	APPR.	DATE
-	70112		FIRST RELEASE	SRS				-



**ISOMETRIC VIEW**

- NOTES:
- WELD SUBFRAME TO OUTRIGGERS, ALL AROUND, BEFORE INSTALLING SHEAR PLATES.
  - WELD SHEAR PLATES (ITEM "3") AS SHOWN. MATCH DRILL THREE 3/4 HOLES IN EACH SHEAR PLATE AS SHOWN. INSTALL FASTENERS AND TORQUE PER TMC-0778.00.
  - ALL WELDING MUST MEET OR EXCEED THE STRENGTH AND ELONGATION OF ER70S-6 WIRE OR ER7018 ROD (60,000 PSI YIELD AND 25% ELONGATION).

NOTE:  
\* INDICATES PART IS SHIPPED LOOSE

* 5	40104-11	3/4-NC X 2 1/2 LG. HHCS GR8	12
* 4	44013-4	3/4" HARDENED WASHER	24
* 3	1007454-1	ANGLE SHEAR PLATE	4
* 2	42027-8	3/4-NC HEX LOCKNUT GRC	12
* 1	MH-1400-49-DWG	DRAWING, RADIAL OR MTG HARDWARE	1

ITEM NO.	PART NUMBER	DESCRIPTION	
			MH-1400-49

UNLESS OTHERWISE NOTED:  
TOLERANCES: DECIMALS  
FRACTIONAL: ± 1/16 XX ± .03  
ANGULAR: ± 1° XX ± .005  
MACHINED SURFACE FINISHES: 125  
ALL DIMENSIONS ARE IN INCHES  
PROJECTION OF VIEWS: 1ST ANGLE  
THIS PRINT CONTAINS CONFIDENTIAL INFORMATION AND IS THE SOLE PROPERTY OF TIME MANUFACTURING AND IS NOT TO BE DISCLOSED, COPIED, OR REPRODUCED WITHOUT THE EXPRESSED PERMISSION OF TIME MANUFACTURING.



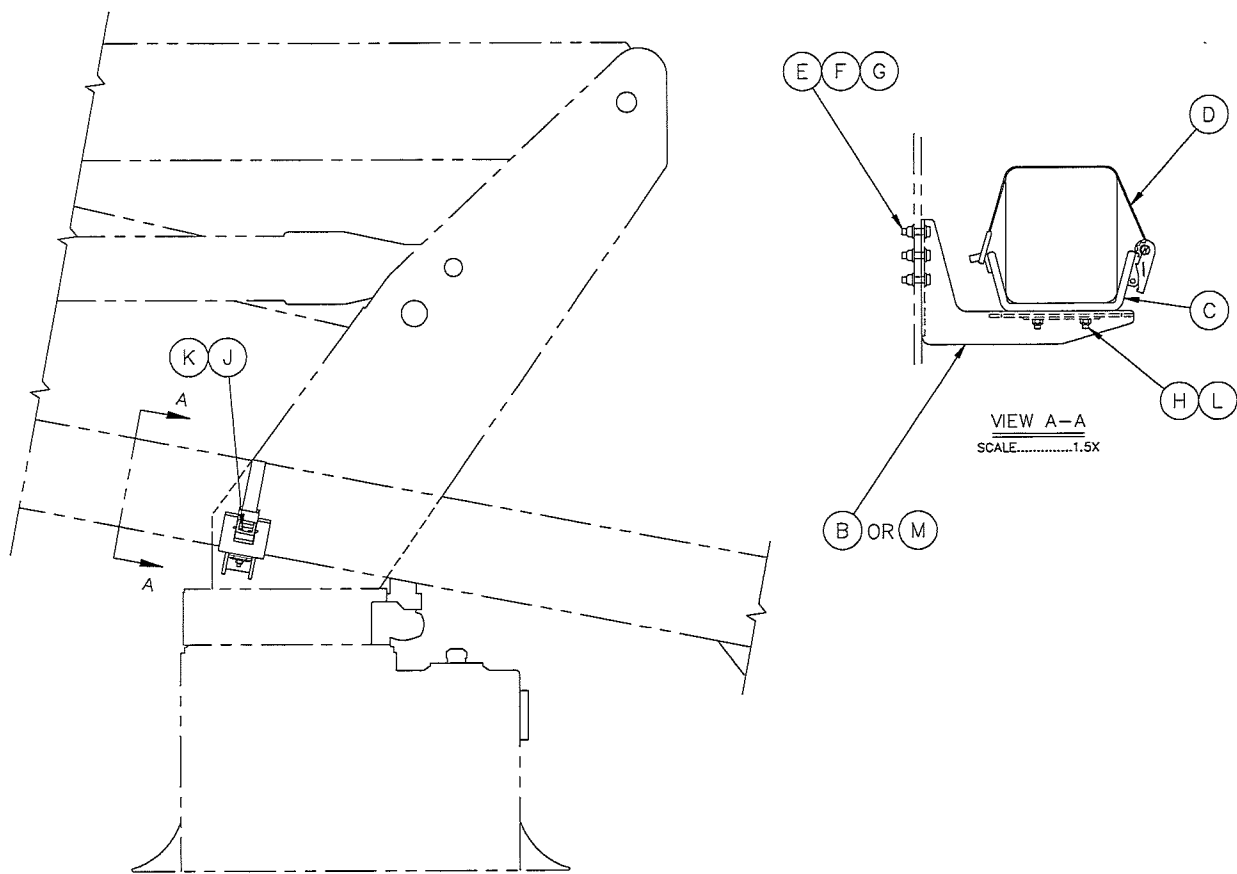
**RADIAL OUTRIGGER MOUNTING HARDWARE**

LEGEND	
	TORQUE PER CHART TMC-0778.00

APPROXIMATE WEIGHT OF MOUNTING HARDWARE = 95 LBS (43 KG)

DWNL BY	DATE	SIZE	SCALE	SHEET	DWG. NO.	REV.
SRS	01/10/2018	B	1:12	1 OF 1	MH-1400-49	-

REV.	ERDN NO.	DESCRIPTION	BY	ENGR.	CHKD.	APPR.	DATE
(E)	71387	ITEM "C" WAS 22342-1.	DHS	MAS	SS	SKV	8/19/19



**INSTALLATION INSTRUCTIONS**

1. SET THE UPPER BOOM IN THE DESIRED STOW POSITION.
2. POSITION BOOM REST WELDMENT AND BOOM REST ALONG UPPER BOOM.
3. MARK HOLE LOCATIONS OF BOOM REST WELDMENT ON TURRET WING.
4. DRILL THREE 17/32 DIA HOLES.
5. INSTALL BOOM REST WELDMENT, BOOM REST, AND TIEDOWN STRAP USING HARDWARE SHOWN.

**NOTE:**  
\* INDICATES PART IS SHIPPED LOOSE.

		-2	-1		
*	1	-	M	32338-2	BOOM REST WELDMENT
	2	2	L	42005-5	1/2-NC HEX LOCKNUT
	1	1	K	12865-1	FLAT
	2	2	J	42005-2	5/16-NC HEX LOCKNUT
*	1	1	H	1005499-1	BOOM REST BACKUP PLATE
*	6	6	G	44013-3	1/2 WASHER
*	3	3	F	42005-5	1/2-NC HEX LOCKNUT
*	3	3	E	40006-9	1/2-NC x 2 HHCS
	1	1	D	8993-3	BOOM TIE-DOWN STRAP
	1	1	C	1008398-1	BOOM REST ASSEMBLY
*	-	1	B	32338-1	BOOM REST WELDMENT
	2	2	A	32871-DWG	UPPER BOOM REST INSTALL VST-7500
QTY.	QTY.	ITEM	PART NO.	DESCRIPTION	

DASH NO.	DESCRIPTION	OPTION
-1	UPPER BOOM REST INSTALL (TURRET MOUNTED) VST-7500-I	MH-1280-5
-2	UPPER BOOM REST INSTALL (TURRET MOUNTED) VST-7500-SI	MH-1280-15

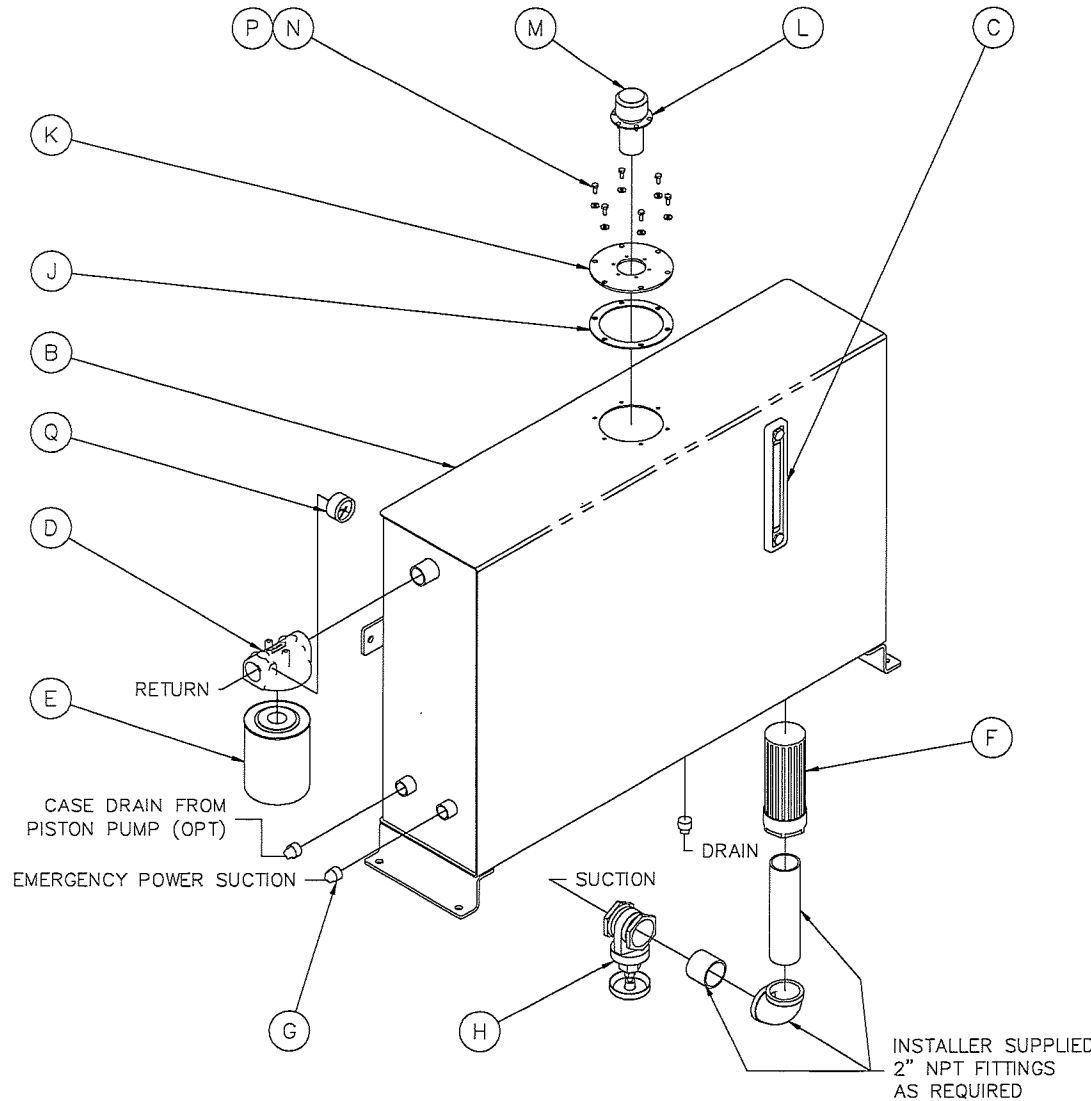
<small>UNLESS OTHERWISE NOTED: TOLERANCES: DECIMALS FRACTIONS ± 1/16 ANGLES ± .03 MACHINED SURFACE FINISHES = .005 PROJECTION OF VIEWS THIS PRINT CONTAINS CONFIDENTIAL INFORMATION AND IS SOLE PROPERTY OF TIME MANUFACTURING, AND IS NOT TO BE DISCLOSED, COPIED, REPRODUCED WITHOUT EXPRESSED PERMISSION OF TIME MANUFACTURING.</small>		MANUFACTURING COMPANY WACO TEXAS		DWN. BY: KCM DATE: 10/04/05	TITLE: UPPER BOOM REST INSTALL VST-7500
		MATERIAL: SEE ABOVE	LOCATION: V	SCALE: 1/15 MANUAL: -	DWG. NO.: 32871-DWG
		FINISH: -	SHEET: 1 OF 1		

REV.	ERRON NO.	DESCRIPTION	BY	CHKD.	APPR.	DATE
57975		FIRST RELEASE	KCM	DJH	SRS	10/21/09
57985		ITEM "H" WAS 54204-1	KCM	DJH	SRS	10/26/09

DASH NO.	DESCRIPTION	OPTION
-1	RESERVOIR 50 GALLON, BULKHEAD	RE-1200-2

NOTES:

- 25 GPM MAXIMUM RECOMMENDED FLOWRATE.
- NOMINAL DIMENSIONS ARE 45 WIDE x 29 1/2 TALL x 11 DEEP EXCLUDING MOUNTING FEET, FILTERS, FITTINGS, ETC.



\* THESE ITEMS ARE SHIP LOOSE.

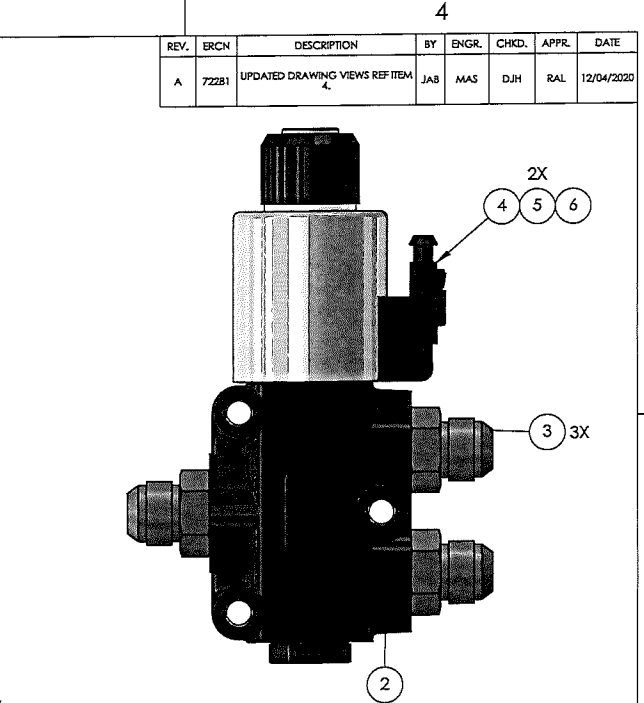
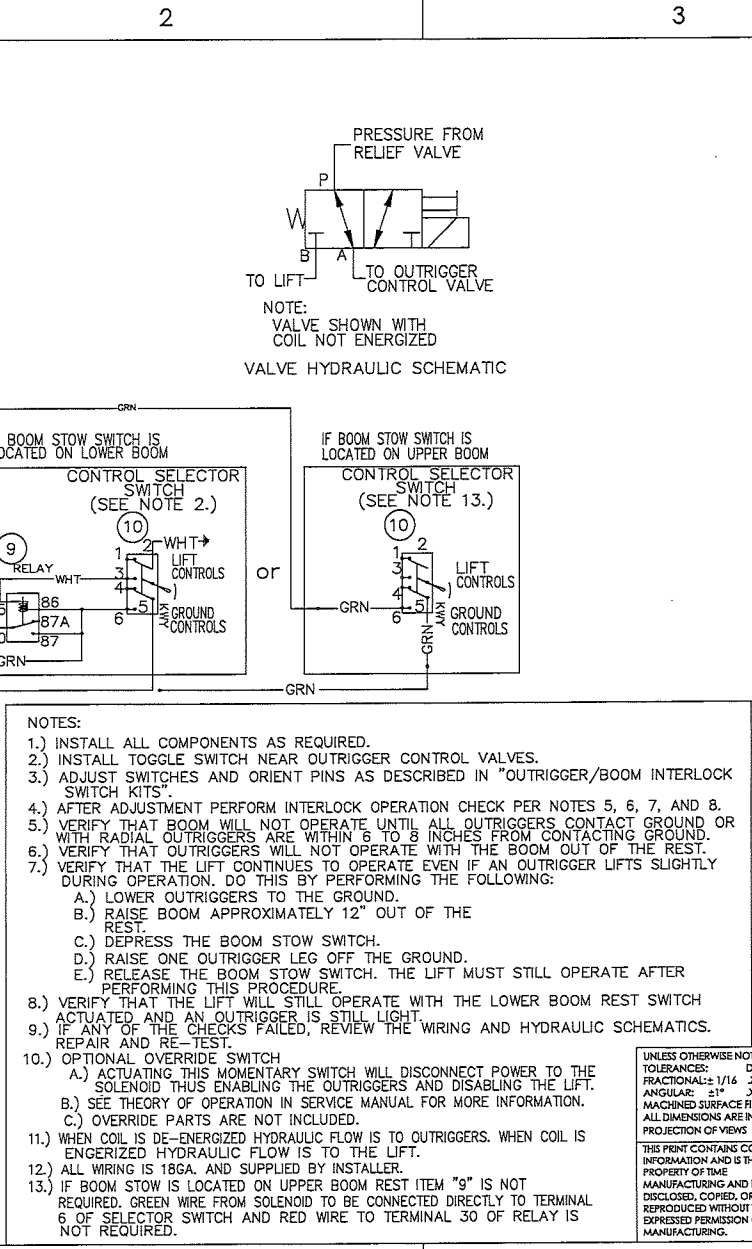
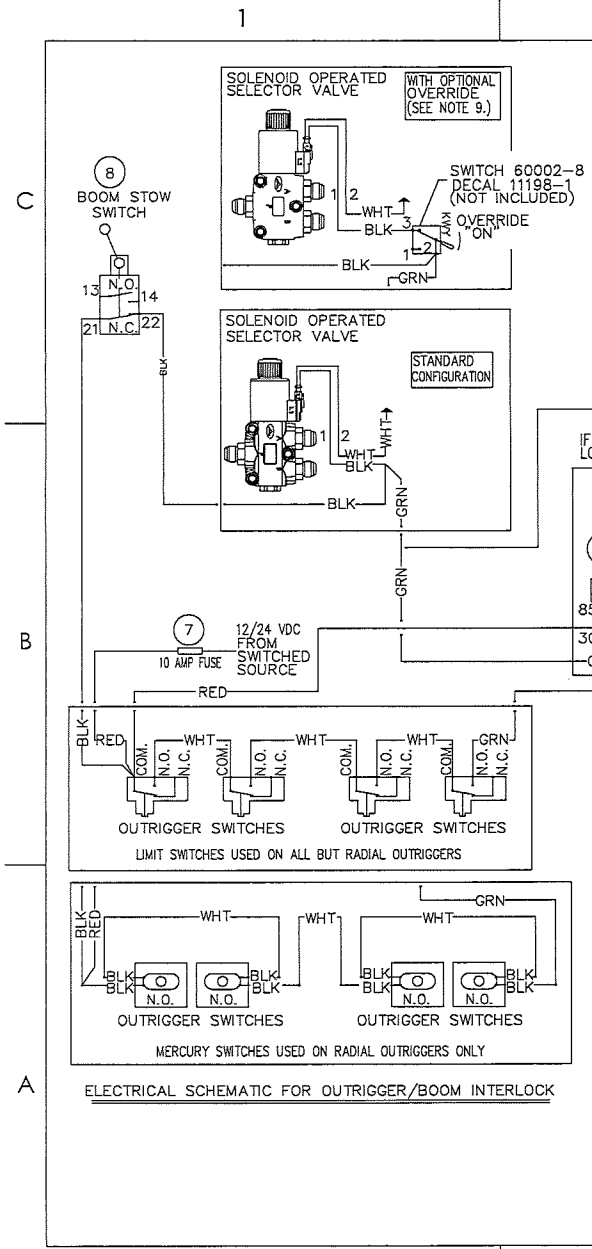
-1			
* 1	Q	58042-3	FILTER GAGE
* 6	P	44013-7	1/4 HARDENED WASHER
* 6	N	40002-2	1/4-20NC x 5/8 LG. HHCS
* 1	M	112	FILLER CAP
* 6	L	48039-4	MAGNA-LOK POP RIVET W/PROTRUDING
* 1	K	13411-1	TANK COVER W/FILLER NECK HOLE
* 1	J	16238-1	GASKET, TANK TOP
* 1	H	54071-5	2" GATE VALVE
* 3	G	50006-5	3/4 NPT STEEL PLUG
* 1	F	58058-4	SUCTION STRAINER TANK MOUNTED
* 1	E	58042-2	HYD. OIL FILTER ELEMENT
* 1	D	58042-1	HYD. OIL FILTER HEAD
* 1	C	58026-3	SIGHT LEVEL GAGE
* 1	B	34818-1	RESERVOIR WELDMENT 50 GAL
* 1	A	34825-DWG	DRAWING, RESERVOIR ASSY 50 GAL BULKHEAD
QTY.	ITEM	PART NO.	DESCRIPTION

LIST OF MATERIAL

UNLESS OTHERWISE NOTED: TOLERANCES: FRACTIONS ± 1/16 DECIMALS ± .005 ANGLES ± 1° MACHINED SURFACE FINISHES: 125 PROJECTION OF VIEWS: 1ST ANGLE ALL DIMENSIONS ARE IN INCHES THIS PRINT CONTAINS CONFIDENTIAL INFORMATION AND IS SOLE PROPERTY OF TIME MANUFACTURING, AND IS NOT TO BE DISCLOSED, COPIED, OR REPRODUCED WITHOUT EXPRESSED PERMISSION OF TIME MANUFACTURING.	<b>TIME</b> MANUFACTURING COMPANY WACO TEXAS	OWN. BY: KCM DATE: 10/21/09 SCALE: 1/10 EST WT #: - MANUAL: -	TITLE: RESERVOIR ASSY, 50 GAL BULKHEAD
MATERIAL: SEE ABOVE FINISH: ----	SHEET: 1 OF 1 DWG. NO.: 34825-DWG		

[Uncontrolled Copy] Order 391724 | HE210005 | RE-1200-2 | BOX -> | MarubaiVo | 11/18/2021 | 11/18/2021 | 11/18/2021 | Page 1/1

REV.	ERCN	DESCRIPTION	BY	ENGR.	CHKD.	APPR.	DATE
A	722B1	UPDATED DRAWING VIEWS REF ITEM 4	JAB	MAS	DJH	RAL	12/04/2020



\* INDICATES PART IS SHIPPED LOOSE

ITEM NO.	PART NUMBER	DESCRIPTION	QTY
10	60013-1	DPST TOGGLE SWITCH	1
9	68007-3	RELAY 12V	1
8	29997-1	BOOM LIMIT SWITCH INSTALLATION	1
7	68004-1	10 AMP FUSE HOLDER	1
6	62066-3	WEDGELock FOR 2 PIN PLUG	1
5	68303-4	SIZE 16 SOCKET 14 AWG	2
4	62066-1	2 PIN PLUG, BLACK	1
3	50009-6	#12 MORB TO #12 MJIC	3
2	54488-1	SOLENOID OPERATED 3-WAY VALVE	1
1	VK-1400-51-DWG	DWG, 12V OUTRIGGER BOOM INTERLOCK	1

UNLESS OTHERWISE NOTED:  
 TOLERANCES: DECIMALS 1/16 XX ±.03  
 FRACTIONALS: 1/16 XX ±.03  
 ANGULAR: ±1° XXX ±.005  
 MACHINED SURFACE FINISHES: 125  
 ALL DIMENSIONS ARE IN INCHES  
 PROJECTION OF VIEWS: 1ST ANGLE

THIS PRINT CONTAINS CONFIDENTIAL INFORMATION AND IS THE SOLE PROPERTY OF TIME MANUFACTURING AND IS NOT TO BE DISCLOSED, COPIED, OR REPRODUCED WITHOUT THE EXPRESSED PERMISSION OF TIME MANUFACTURING.

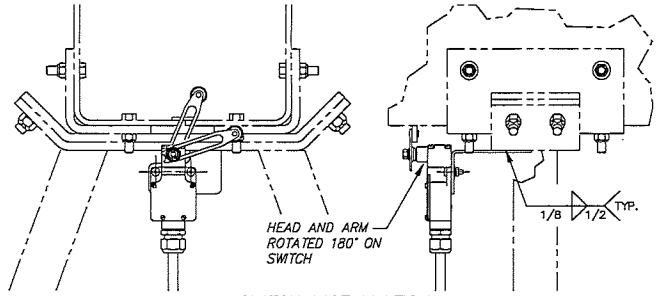
**TIME MANUFACTURING COMPANY**

FINISH -

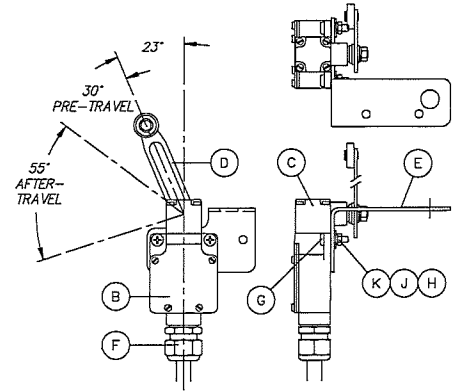
DWN. BY	DATE	SIZE	SCALE	SHEET	DWG. NO.	REV.
DEF	12/14/2018	B	1:5	1 OF 1	VK-1400-51	A

12V OUTRIGGER BOOM INTERLOCK (9 TO 20GPM)

REV.	CRCH NO.	DESCRIPTION	BY	CHKD.	APPR.	DATE
①	61137	ADDED SWITCH INSTALLATION FOR TMO, ADDED PAGE 2	AKP	DJR	SRS	3/28/14

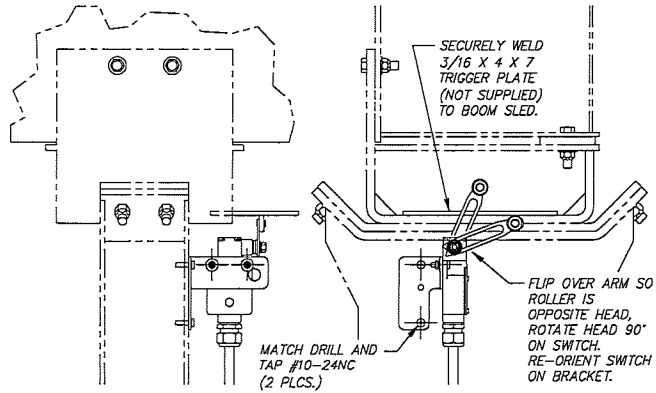


**SWITCH INSTALLATION**  
VO-42-MHI (SHOWN)  
VN-551 (SIMILAR)



**BASIC SWITCH ASSEMBLY**  
SCALE.....1.5X

- NOTES:
- 1.) "BASIC SWITCH ASSEMBLY" IS PROVIDED AS A GENERAL ASSEMBLED CONFIGURATION. DEVIATIONS FROM THIS DETAIL ARE MENTIONED IN VARIOUS SWITCH INSTALLATIONS AS NEEDED.
  - 2.) "SWITCH INSTALLATIONS" SHOW BOTH THE NON-ACTUATED AND ACTUATED SWITCH CONDITIONS. THE SWITCH IS TO BE MOUNTED SO THAT WHEN THE BOOM IS STOWED THE ADJUSTABLE ARM IS WELL INTO THE AFTER-TRAVEL RANGE.
  - 3.) THE ADJUSTABLE ARM IS TO BE SET AT MAXIMUM REACH.
  - 4.) SEE INTERLOCK INSTALLATION FOR WIRING SCHEMATIC.



**SWITCH INSTALLATION**  
VO-255/260

\* INDICATES PARTS TO BE SHIPPED LOOSE

-1			
QTY.	ITEM	PART NO.	DESCRIPTION
*	2	K	44002-3 #10 FLATWASHER
*	4	J	44000-7 #10 LOCKWASHER
*	2	H	42000-22 #10-24NC HEX NUT
*	4	G	40014-3 #10-24NC X 3/4 LG. PHMS
*	1	F	80031-7 STRAIN RELIEF 1/2 HUB (.375--.500)
*	1	E	29998-1 BRACKET, SWITCH MOUNTING
*	1	D	510390 ADJUSTABLE ARM - LONG
*	1	C	510370 OFFSET HEAD LIMIT SWITCH
*	1	B	510360 LIMIT SWITCH (BODY ONLY)
*	1	A	29997-DWG BOOM LIMIT SWITCH INSTALLATION

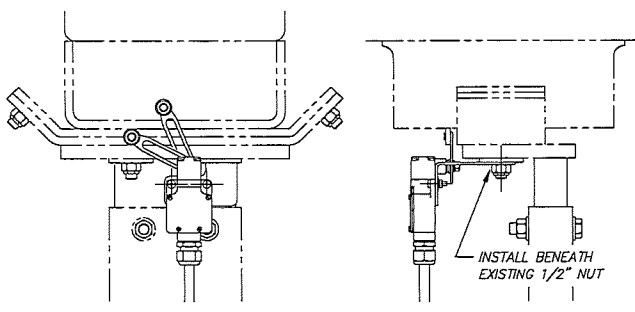
UNLESS OTHERWISE NOTED:  
TOLERANCES: DECIMALS  
FRACTIONS ± 1/16 .00 ± .01  
ANGLES ± .004 .000 ± .005  
MACHINED SURFACE FINISHES - .001  
PRODUCTION OF VIEWS ( ) ( )  
ALL DIMENSIONS ARE IN INCHES  
THIS PRINT CONTAINS CONFIDENTIAL INFORMATION AND IS SOLE PROPERTY OF TIME MANUFACTURING AND IS NOT TO BE DISCLOSED, COPIED, OR REPRODUCED WITHOUT EXPRESSED PERMISSION OF TIME MANUFACTURING.

**TIME** MANUFACTURING COMPANY  
WACO TEXAS

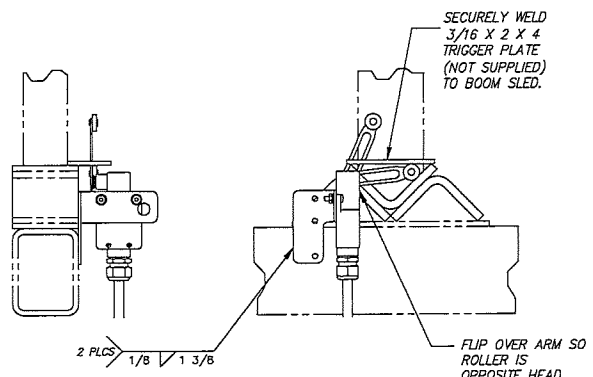
MATERIAL: SEE LIST OF MATERIAL  
FINISH: ---

DWN. BY	DATE	TITLE
LBR	1-21-04	BOOM LIMIT SWITCH INSTALLATION
SIZE	B	SCALE 1=5.5
LOCATION	V	MANUAL -
SHEET	1 OF 2	DWG. NO. 29997-DWG

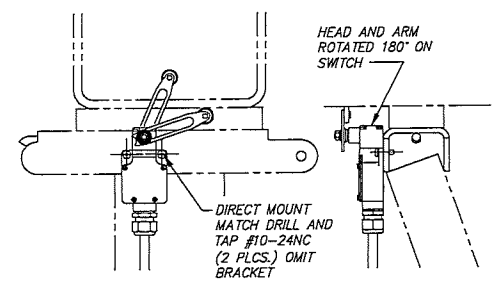
REV. 0



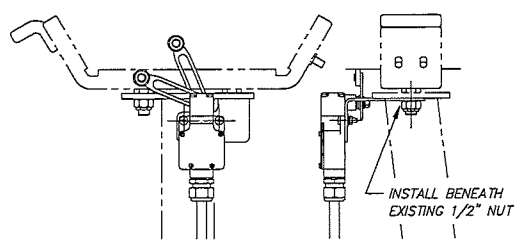
**SWITCH INSTALLATION**  
VO-40-MHI, VO-43-I AND VST-7500I



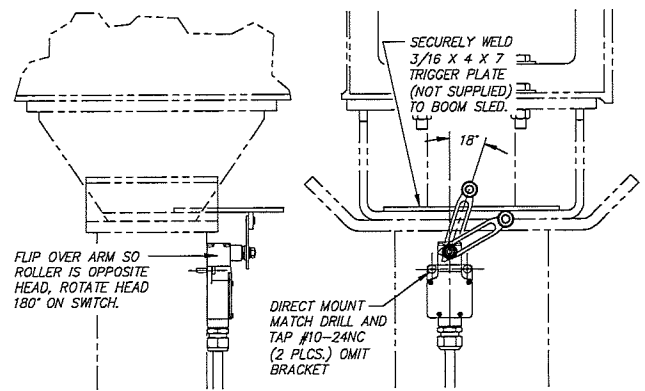
**SWITCH INSTALLATION**  
TMD-2042/45/47/50-T/B



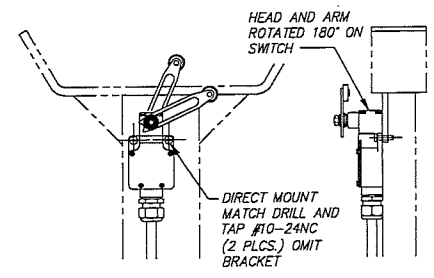
**SWITCH INSTALLATION**  
VST-236/240/2900/3100  
T-3100



**SWITCH INSTALLATION**  
SST-37/40, TEL,  
VST-5000/5500/6000



**SWITCH INSTALLATION**  
VO-350/355-MHI



**SWITCH INSTALLATION**  
VO-36-I/N

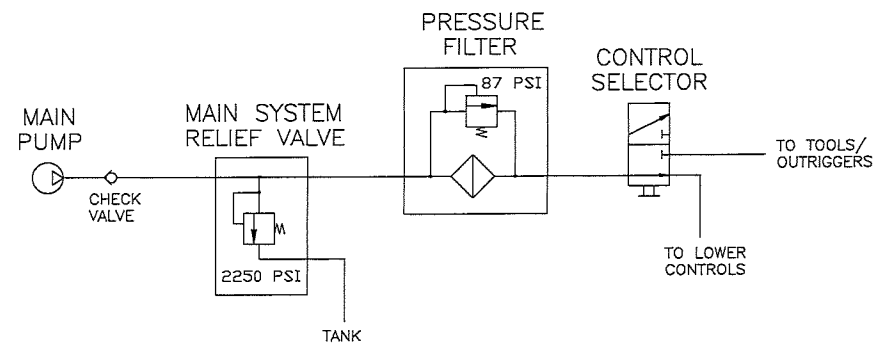
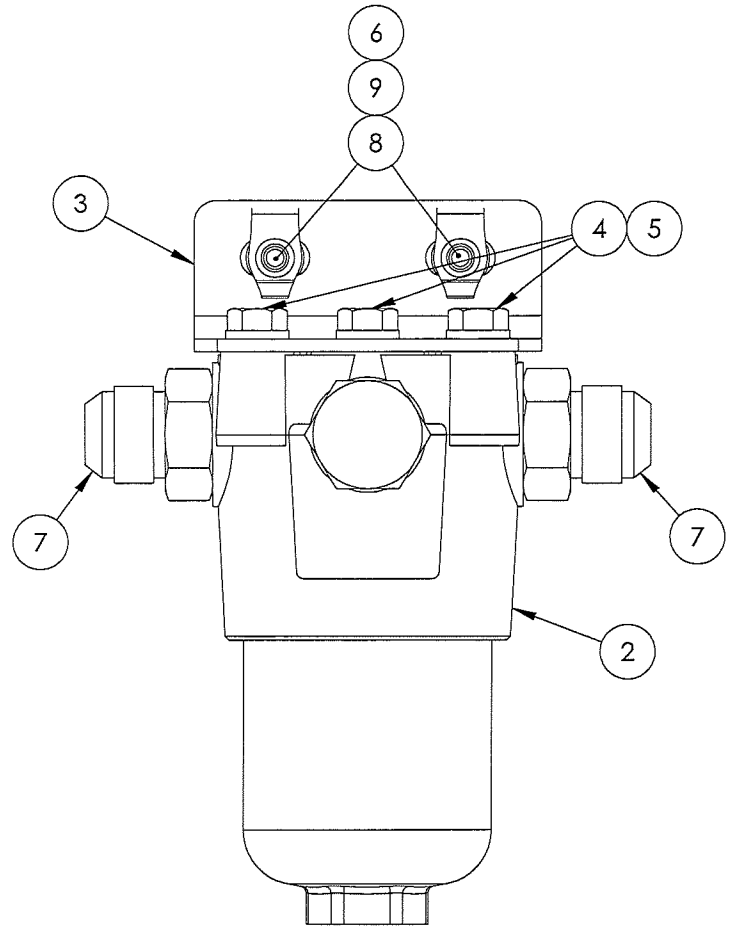
<small>UNLESS OTHERWISE NOTED: TOLERANCES: DECIMALS FRACTIONS ± 1/16 .XX ± .03 ANGLES ± 1 .XXX ± .005 MACHINED SURFACE FINISHES: 125 PROJECTION OF VIEWS: 1ST ANGLE ALL DIMENSIONS ARE IN INCHES THIS PRINT CONTAINS CONFIDENTIAL INFORMATION AND IS SOLE PROPERTY OF TIME MANUFACTURING AND IS NOT TO BE DISCLOSED, COPIED, OR REPRODUCED WITHOUT EXPRESSED PERMISSION OF TIME MANUFACTURING.</small>		MANUFACTURING COMPANY WACO TEXAS		DWN. BY: LBR DATE: 1-21-04	TITLE: BOOM LIMIT SWITCH INSTALLATION
		MATERIAL: SEE PAGE 1 FINISH: ---	LOCATION: V	SCALE: 1=5.5 MANUAL: ---	

1

2

3

REV.	ERCN	DESCRIPTION	BY	ENGR.	CHKD.	APPR.	DATE
A	71251	PICTORIAL UPDATE FOR ITEM "3", ITEM "4" WAS 40004-2, ITEM "5" WAS 44013-6, ITEM "8" WAS 40002-3, AND ITEM 9 WAS 42005-1	DEF	MAS	LSK	ARH	06/19/2019



**SCHMATIC**

\* INDICATES PART IS SHIPPED LOOSE

NOTES	ITEM NO.	PART NUMBER	DESCRIPTION	HYD-1200-10	
	*	9	42033-1	1/4-NC NUT, EXTRUDED U-TYPE	2
	*	8	40002-5	1/4-NC X 1 LG. HHCS GR5	2
	*	7	50009-6	#12 MORB TO #12 MJIC	2
	*	6	44013-7	1/4" HARDENED WASHER	2
	*	5	44000-11	3/8 LOCKWASHER HELICAL SPRING	3
	*	4	40004-4	3/8-NC X 7/8 LG. HHCS GR5	3
	*	3	1008075-1	PRESSURE FILTER BRACKET	1
	*	2	58109-1	PRESSURE FILTER	1
	*	1	HYD-1200-10-DWG	DWG, PRESSURE FILTER MOUNTING ASSY	1

- NOTES:
- INSTALL FILTER AFTER RELIEF VALVE & BEFORE SELECTOR VALVE (SEE SCHEMATIC)
  - HOSES SUPPLIED BY INSTALLER

UNLESS OTHERWISE NOTED:  
 TOLERANCES: DECIMALS  
 FRACTIONAL: ± 1/16 .XX ± .03  
 ANGULAR: ± 1° .XXX ± .005  
 MACHINED SURFACE FINISHES= 125/  
 ALL DIMENSIONS ARE IN INCHES  
 PROJECTION OF VIEWS

THIS PRINT CONTAINS CONFIDENTIAL INFORMATION AND IS THE SOLE PROPERTY OF TIME MANUFACTURING AND IS NOT TO BE DISCLOSED, COPIED, OR REPRODUCED WITHOUT THE EXPRESSED PERMISSION OF TIME MANUFACTURING.

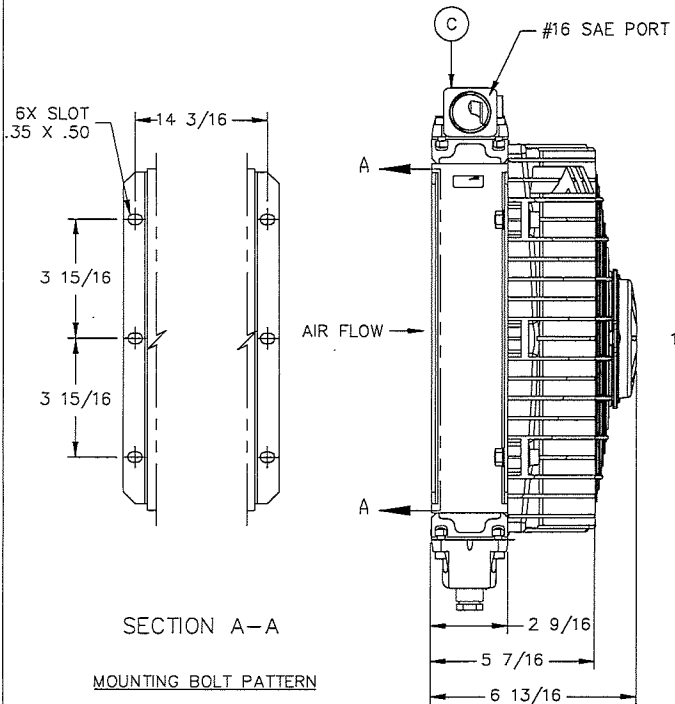
MATERIAL NO.		MATERIAL DESCRIPTION				
-		-				
		<p align="center"><b>PRESSURE FILTER MOUNTING ASSEMBLY</b></p>				
				FINISH -		
DWN. BY	DATE	SIZE	SCALE	SHEET	DWG. NO.	REV.
DTG	11/15/2018	A	1:2	1 OF 1	HYD-1200-10	A

1

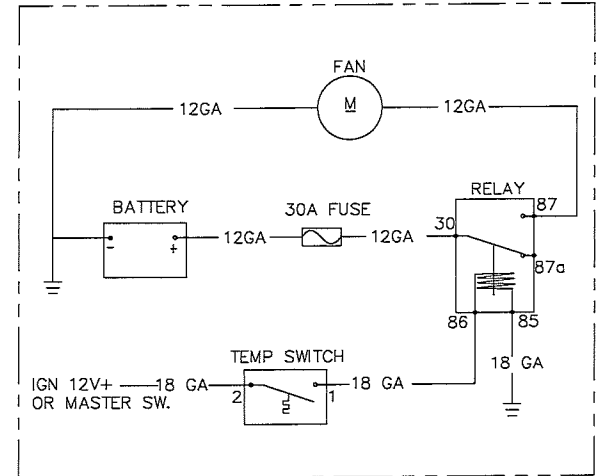
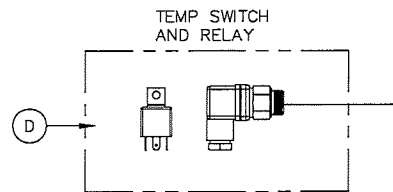
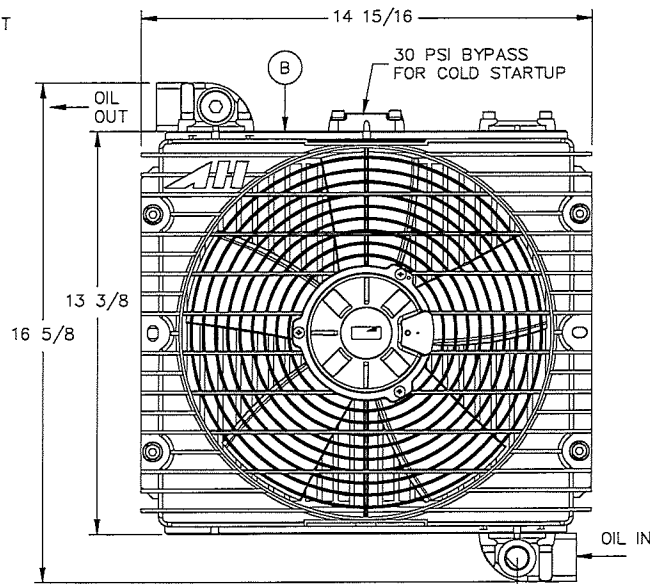
2

3

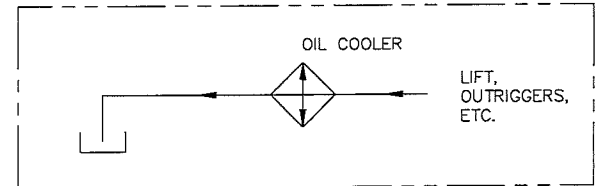
REV.	ETCH NO.	DESCRIPTION	BY	ENGR.	CHKD.	APPR.	DATE
(1)	72203	ADDED HYDRAULIC SCHEMATIC	AJP	DTC	LSK	SRS	10/9/20



SECTION A-A  
MOUNTING BOLT PATTERN



ELECTRICAL SCHEMATIC



HYDRAULIC SCHEMATIC

\* THESE ITEMS TO BE SHIPPED LOOSE.

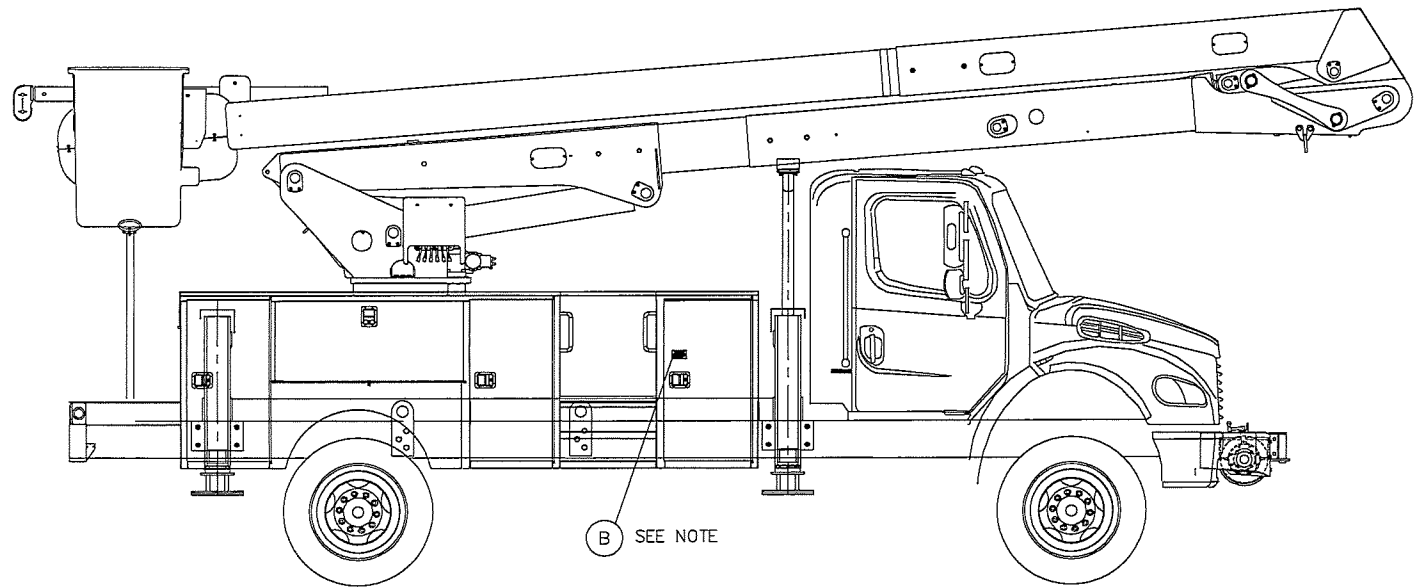
*	1	D	1007754-1	TEMPERATURE SWITCH AND RELAY
*	1	C	50443-1	OIL COOLER FITTINGS AND BLOCK PLATE
*	1	B	1007753-1	OIL COOLER 8 BTU/MIN °F
*	1	A	HYD-1200-9-DWG	DWG, OIL COOLER #16 PORTS 8 BTU
QTY.	ITEM		PART NO.	DESCRIPTION

LIST OF MATERIAL

NOTE:  
UPFITTER TO SUPPLY HYDRAULIC FITTINGS AND FASTENERS TO INSTALL COOLER.  
ALL WIRING AND FUSING TO BE PROVIDED BY UPFITTER

UNLESS OTHERWISE NOTED: TOLERANCES: FRACTIONS ± 1/16 DECIMALS .001 ANGLES ± .1 MACHINED SURFACE FINISHES: PROJECTION OF VIEWS: (1) ALL DIMENSIONS ARE IN INCHES	TIME MANUFACTURING COMPANY WACO TEXAS	DWG. NO. 11/17/17 SCALE 1/4"	TITLE OIL COOLER #16 PORTS 8 BTU/MIN °F
THIS PRINT CONTAINS CONFIDENTIAL INFORMATION AND IS SOLE PROPERTY OF TIME MANUFACTURING, AND IS NOT TO BE DISCLOSED, COPIED, OR REPRODUCED WITHOUT EXPRESSED PERMISSION OF TIME MANUFACTURING.	MATERIAL SEE LIST OF MATERIALS	EST. WT. # —	MANUAL —
FINISH —	SHEET 1 OF 1	DWG. NO. HYD-1200-9	

REV.	ERCN NO.	DESCRIPTION	BY	ENGR.	CHKD.	APPR.	DATE
☒	71701	FIRST RELEASE	MB	DTG	DJH	SKV	1/14/20



**CALIFORNIA PROPOSITION**  
  
**65 WARNING**  
 WARNING: THIS PRODUCT CONTAINS CHEMICALS KNOWN TO THE STATE OF CALIFORNIA TO CAUSE CANCER, AND BIRTH DEFECTS OR OTHER REPRODUCTIVE HARM. FOR MORE INFORMATION, GO TO [www.P65Warnings.co.gov](http://www.P65Warnings.co.gov).

SCALE.....20X

NOTE:  
 APPLY NEAR ENTRANCE TO BED. (IF APPLICABLE)

\* INDICATES PARTS ARE SHIPPED LOOSE

QTY.	ITEM	PART NO.	DESCRIPTION
*	1	B	1008508-1 PROP 65 COMPLIANCE DECAL
	1	A	DE-1200-7-DWG DWG, DECAL KIT - PROPOSITION 65

LIST OF MATERIAL

UNLESS OTHERWISE NOTED: TOLERANCES: DECIMALS FRACTIONS ± 1/16 X ± .1 ANGLES ± .XX ± .03 .XXX ± .005 MACHINED SURFACE FINISHES = 125/ PROJECTION OF VIEWS ALL DIMENSIONS ARE IN INCHES THIS PRINT CONTAINS CONFIDENTIAL INFORMATION AND IS SOLE PROPERTY OF TIME MANUFACTURING, AND IS NOT TO BE DISCLOSED, COPIED, OR REPRODUCED WITHOUT EXPRESSED PERMISSION OF TIME MANUFACTURING.	 MANUFACTURING COMPANY WACO TEXAS	DWN. BY	DATE	TITLE DECAL KIT - PROPOSITION 65
	MATERIAL	MB	1/14/20	
	FINISH	SIZE	SCALE	
		A	1:50	
		EST WT #	MANUAL	
		SHEET	DWG. NO.	
		1 OF 1	DE-1200-7	